



DRESS

Dress has hemmed neckline, gathered skirt, patch pockets, long or short sleeves and Velcro® closure on back. Designed for light to medium weight woven or knit fabrics.

Material Required: 3/8 yd (0.35 m) of 45" (115 cm) wide fabric.

Notions: Thread, 4" (10 cm) of Velcro®.

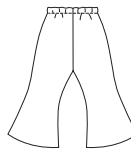


FLARED PANTS

Flared pants have elastic waist and are designed for light to medium weight woven or knit fabrics.

Material Required: 3/8 yd (0.35 m) of 24" (60 cm) wide fabric (minimum width).

Notions: Thread, 9" (23 cm) of 3/8" (1 cm) wide elastic.



SHIRTS

Shirt has collar, breast pocket, shirt-tail hemline and button or snap closure. View A can be made with short or long sleeves. View B is sleeveless. Designed for light to medium weight woven or knit fabrics.

Material Required: 1/4 yd (0.25 m) of 45" (115 cm) wide fabric.

Notions: Thread, four 1/4" (6 mm) buttons or baby snaps, scrap piece of fusible interfacing.

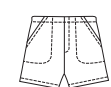
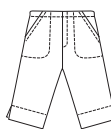


CROPPED PANTS & SHORTS

Pants and shorts have fake fly, front pockets and elastic at back waist. Pants have side hemline slits and wide hems. Designed for light to medium weight woven or knit fabrics.

Material Required: Pants: 3/8 yd (0.35 m) of 26" (65 cm) wide fabric (minimum width). Shorts: 1/4 yd (0.25 m) of 26" (65 cm) wide fabric (minimum width).

Notions: Thread, 4" (10 cm) of 3/8" (1 cm) wide elastic.



CARDIGAN

Cardigan has hemmed neckline and front edges, ribbon tie closure on front and can be made with long or short sleeves. Designed for light to medium weight woven or knit fabrics.

Material Required: 1/4 yd (0.25 m) of 45" (115 cm) wide fabric.

Notions: Thread, 10" (25 cm) of narrow ribbon.



HAT

Hat has four panels, brim and elastic on back. Designed for light to medium weight woven fabrics.

Material Required: 1/8 yd (0.15 m) of 30" (56 cm) wide fabric (minimum width).

Notions: Thread, 5" (12 cm) of 1/4" (6 mm) wide elastic, 1/8 yd (0.15 m) of fusible interfacing 12" (30 cm) wide.

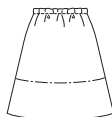


SKIRT

Skirt in two lengths has elastic waist and is designed for light to medium weight woven or knit fabrics.

Material Required: Long skirt: 3/8 yd (0.35 m) of 22" (56 cm) wide fabric (minimum width). Short Skirt: 1/4 yd (0.25 m) of 22" (56 cm) wide fabric (minimum width).

Notions: Thread, 9" (23 cm) of 3/8" (1 cm) wide elastic.



TOP

Sleeveless top has neckline and armholes finished with narrow hems and Velcro® closure on back. Designed for light to medium weight woven or knit fabrics.

Material Required: 1/4 yd (0.25 m) of 18" (46 cm) wide fabric (minimum width).

Notions: Thread, 4" (10 cm) of Velcro®.



KWIK-SEW®
price **2878**

DOLL CLOTHES
Fits 18" (45 cm) Dolls

SWIMSUIT

Two piece swimsuit. Top has neckline and bottom edge finished with narrow hems, back and armholes are finished with binding that extends for ties. Panties have boy legs and elastic waist. Designed for two-way stretch swimwear fabrics with 75% stretch.

Material Required: 1/4 yd (0.25 m) of 30" (75 cm) wide fabric (minimum width).

Notions: Thread, 9" (23 cm) of 1/4" (6 mm) wide elastic.



WRAP SKIRT

One piece wrap skirt has all edges finished with narrow hems and ties on front. Designed for light to medium weight woven and knit fabric or swimwear fabric can be used.

Material Required: 3/8 yd (0.35 m) of 28" (70 cm) wide fabric (minimum width).

Notions: Thread.

