

UV Suits

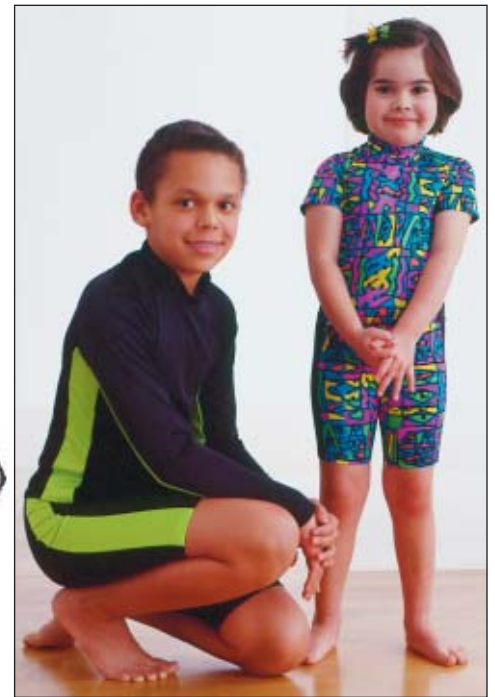
Protects from harmful rays



B

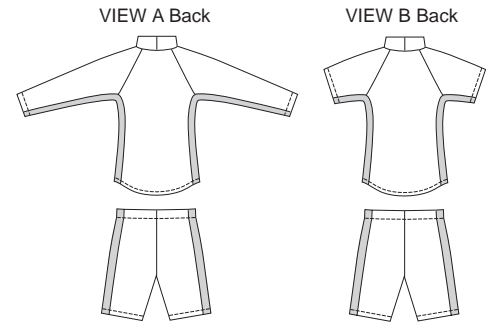


A



GIRLS' & BOYS'

Boys' and Girls' very close fitting shorts and shirts. Pull-over shirts have raglan sleeves, collar, and side panels from contrast fabric. View A has long sleeves and View B has short sleeves. Shorts have side panels from contrast fabric, elastic waist and hemmed bottom edges.



Legend:
 Fabric
 Contrast Fabric

KWIK & EASY

KWIK•SEW®
2888
 price **2889**

DESIGNED FOR TWO-WAY STRETCH FABRIC WITH 75% STRETCH
 Suggested Fabrics: Swimwear fabric with spandex-Lycra®

BOYS' & GIRLS' SHORTS & SHIRTS
 2888 Sizes: 4-5-6-7
 2889 Sizes: 8-10-12-14

Size	4	5	6	7	8	10	12	14	
Finished Length of Shirt at Center Back (Back is 1 1/4" (3 cm) longer than front)									
View A or B	13 1/2 (34)	14 1/4 (36)	15 (38)	15 3/4 (40)	16 1/2 (42)	17 1/4 (44)	18 1/4 (46)	19 1/4 (49)	" (cm)
Finished Inside Leg Seam	4 3/4 (12)	5 1/4 (13)	5 3/4 (14)	6 1/4 (16)	6 3/4 (17)	7 1/4 (18)	8 (20)	8 3/4 (22)	" (cm)
Material Required: Fabric requirement allows for nap, one way design or shading. Extra fabric may be needed to match design or for shrinkage.									
Fabric 60" (152 cm) Wide									
View A Fabric	3/4 (0.70)	7/8 (0.80)	7/8 (0.80)	7/8 (0.80)	1 1/8 (1.05)	1 1/4 (1.15)	1 1/4 (1.15)	1 3/8 (1.30)	yd (m)
Contrast Fabric	1/4 (0.25)	1/4 (0.25)	1/4 (0.25)	1/4 (0.25)	1/4 (0.25)	1/4 (0.25)	1/4 (0.25)	1/4 (0.25)	yd (m)
View B Fabric	5/8 (0.60)	5/8 (0.60)	3/4 (0.70)	3/4 (0.70)	7/8 (0.80)	1 (0.95)	1 (0.95)	1 1/8 (1.05)	yd (m)
Contrast Fabric	1/4 (0.25)	1/4 (0.25)	1/4 (0.25)	1/4 (0.25)	1/4 (0.25)	1/4 (0.25)	1/4 (0.25)	1/4 (0.25)	yd (m)
Fabric 45" (115 cm) Wide									
View A Fabric	1 (0.95)	1 (0.95)	1 1/8 (1.05)	1 1/8 (1.05)	1 3/8 (1.30)	1 1/2 (1.40)	1 5/8 (1.50)	1 5/8 (1.50)	yd (m)
Contrast Fabric	1/4 (0.25)	1/4 (0.25)	1/4 (0.25)	1/4 (0.25)	3/8 (0.35)	3/8 (0.35)	3/8 (0.35)	3/8 (0.35)	yd (m)
View B Fabric	3/4 (0.70)	7/8 (0.80)	7/8 (0.80)	7/8 (0.80)	1 1/4 (1.15)	1 1/4 (1.15)	1 3/8 (1.30)	1 3/8 (1.30)	yd (m)
Contrast Fabric	1/4 (0.25)	1/4 (0.25)	1/4 (0.25)	1/4 (0.25)	1/4 (0.25)	1/4 (0.25)	1/4 (0.25)	1/4 (0.25)	yd (m)
Notions: Thread, 5/8 yd (0.60 m) of 3/4" (2 cm) wide swimwear elastic.									