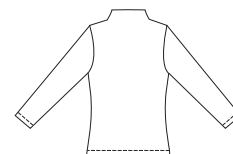




Misses' semi-fitted pull-over tops with long sleeves. View A has funnel neck. View B has round neckline with self fabric neckband. View C has V-neckline with self fabric neckband.

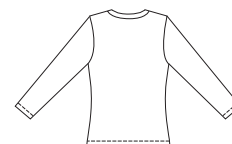
VIEW A Back



VIEW B Back



VIEW C Back



KWIK
Serge

KWIK-SEW
price **2899**

DESIGNED FOR HEAVYWEIGHT STRETCH KNITS ONLY

Suggested Fabrics: Polarfleece®, heavy fleece, berber fleece, sweatshirt fleece

MISSES' TOPS

Sizes: XS-S-M-L-XL

DUAL INSTRUCTION INCLUDED: SERGER (OVERLOCK) AND STANDARD SEWING MACHINES

Size	XS	S	M	L	XL	
Finished Length at Center Back from Natural Neckline						
View A, B or C	23 (58)	23 1/2 (59)	24 1/4 (61)	24 1/2 (62)	25 1/4 (64)	" (cm)
Material Required:	Fabric requirement allows for nap, one-way design or shading. Extra fabric may be needed to match design or for shrinkage.					
Fabric 60" (152 cm) Wide						
View A	1 5/8 (1.50)	1 5/8 (1.50)	1 5/8 (1.50)	1 5/8 (1.50)	1 3/4 (1.60)	yd (m)
View B or C	1 1/2 (1.40)	1 1/2 (1.40)	1 1/2 (1.40)	1 5/8 (1.50)	1 5/8 (1.50)	yd (m)

Notions: Thread. VIEW B & C: Scrap piece of fusible interfacing.