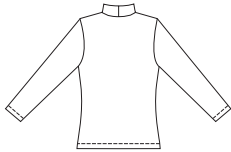
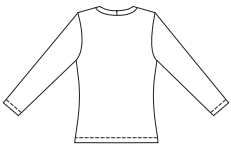


Misses' shirts. View A has full length sleeves and mock turtleneck. View B has V-neckline with self fabric neckband and full length sleeves. View C has crew neckband and short sleeves. View A and C can be made with ribbing or self fabric neckbands.

VIEW A Back



VIEW B Back



VIEW C Back



**KWIK•SEW®**  
**2900** price



**MISSES' SHIRTS**  
 Sizes: XS-S-M-L-XL

DESIGNED FOR STRETCH KNITS ONLY WITH 25% STRETCH ACROSS THE GRAIN  
 Suggested Fabrics: Interlock, jersey, textured knits, stretch velour, pointelle jersey, thermal knits

DUAL INSTRUCTIONS INCLUDED: SERGER (OVERLOCK) AND STANDARD SEWING MACHINES

Size	XS	S	M	L	XL	
<b>Finished Length at Center Back</b>						
View A, B & C	22 1/2 (57)	23 1/4 (59)	23 3/4 (60)	24 1/4 (61)	25 (63)	" (cm)
<b>Material Required:</b> Fabric requirement allows for nap, one-way design or shading. Extra fabric may be needed to match design or for shrinkage.						
<b>Fabric 60" (152 cm) Wide</b>						
View A	1 1/2 (1.40)	1 1/2 (1.40)	1 1/2 (1.40)	1 5/8 (1.50)	1 5/8 (1.50)	yd (m)
View B	1 1/2 (1.40)	1 1/2 (1.40)	1 1/2 (1.40)	1 5/8 (1.50)	1 5/8 (1.50)	yd (m)
View C	3/4 (0.70)	7/8 (0.80)	1 1/4 (1.15)	1 1/4 (1.15)	1 1/4 (1.15)	yd (m)

**Notions:** Thread, scrap piece of fusible interfacing. VIEW A: Optional ribbing - 5" (13 cm) of 17" (42 cm) wide (minimum width.) VIEW C: Optional ribbing - 3" (8 cm) of 17" (42 cm) wide (minimum width.)