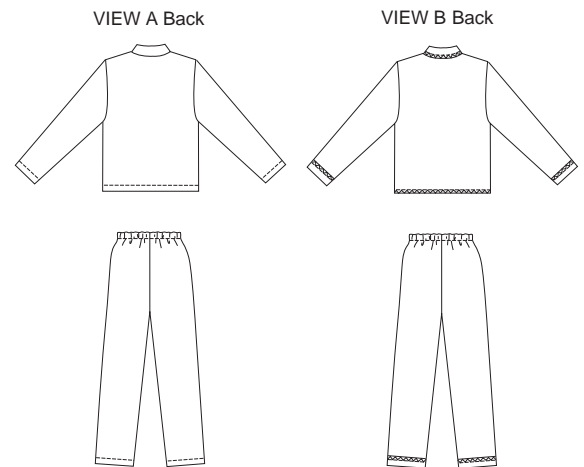




Misses' pajamas have collar and front button or snap closure. Pull-on pants, without side seams, have elastic waist. View A top has patch pockets and contrast fabric facings and undercollar. View B has breast pocket and all outside edges are finished using serger (overlock) machine or zigzag stitches (wrong side of fabric will show).



KWIK
Serge

KWIK•SEW
price **2907**

DESIGNED FOR MEDIUM TO HEAVYWEIGHT STRETCH KNITS ONLY
Suggested Fabrics: Polarfleece®, sweatshirt fleece, blanket fleece
Contrast Fabric View A: Lightweight woven or knit fabrics

MISSSES' PAJAMAS
Sizes: XS-S-M-L-XL

DUAL INSTRUCTION INCLUDED: SERGER (OVERLOCK) AND STANDARD SEWING MACHINES

Size	XS	S	M	L	XL	
Finished Length of Top at Center Back						
View A	21 1/4 (54)	22 (56)	22 3/4 (58)	23 1/2 (60)	24 1/4 (62)	" (cm)
View B	22 1/4 (56)	23 (58)	23 3/4 (60)	24 1/2 (62)	25 1/4 (64)	" (cm)
Finished Inside Leg Seam						
View A or B	29" (74 cm) - All Sizes					
Material Required:	Fabric requirement allows for nap, one-way design or shading. Extra fabric may be needed to match design or for shrinkage.					
Fabric 60" (152 cm) Wide						
View A or B	2 5/8 (2.40)	2 5/8 (2.40)	2 3/4 (2.55)	3 (2.75)	3 1/8 (2.85)	yd (m)
Contrast Fabric 60" (152 cm) or 45" (115 cm) Wide						
View A	3/8 (0.35)	3/8 (0.35)	3/8 (0.35)	3/8 (0.35)	3/8 (0.35)	yd (m)
Notions:	Thread, 1 yd (0.90 m) of 1" (2.5 cm) wide elastic. VIEW A: Five 3/4" (20 mm) buttons or snaps. VIEW B: Four 3/4" (20 mm) buttons or snaps.					

SLEEPWEAR & LINGERIE