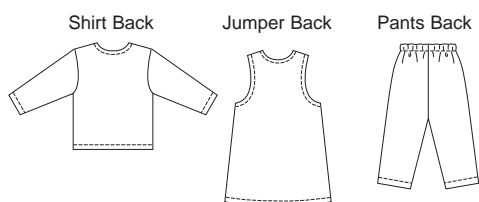
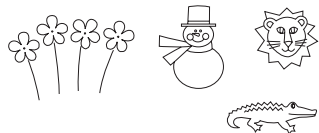




Toddlers' pants, shirt and jumper. Pull-over shirt has neckline finished with narrow hem. Pull-on pants, without side seams, have elastic waist. Pull-over jumper has neckline and armholes finished with narrow hems and patch pockets. Four appliqué designs are included.



Appliqués



KWIK•SEW®
2912 price

KWIK
Serge®

TODDLERS' JUMPER, SHIRT & PANTS

Sizes: T1-T2-T3-T4

DESIGNED FOR HEAVYWEIGHT STRETCH KNITS
 Suggested Fabrics: Polarfleece®, sweatshirt fleece

DUAL INSTRUCTION INCLUDED: SERGER (OVERLOCK) AND STANDARD SEWING MACHINES

Size	T1	T2	T3	T4	
Finished Length at Center Back from Natural Neckline					
Shirt	13 (33)	14 (36)	15 (38)	16 (41)	" (cm)
Jumper	15 3/4 (40)	17 1/4 (44)	19 (48)	20 3/4 (53)	" (cm)
Finished Inside Leg Seam of Pants	10 1/4 (26)	11 3/4 (30)	13 1/4 (33)	14 3/4 (37)	" (cm)
Material Required: Fabric requirement allows for nap, one-way design or shading. Extra fabric may be needed to match design or for shrinkage.					
Fabric 60" (152 cm) Wide					
Pants & Shirt	1 (0.95)	1 (0.95)	1 1/8 (1.05)	1 1/4 (1.15)	yd (m)
Pants	3/4 (0.70)	3/4 (0.70)	3/4 (0.70)	7/8 (0.80)	yd (m)
Shirt	1/2 (0.50)	5/8 (0.60)	5/8 (0.60)	5/8 (0.60)	yd (m)
Jumper	5/8 (0.60)	5/8 (0.60)	3/4 (0.70)	3/4 (0.70)	yd (m)

Notions: Thread. Pants: 5/8 yd (0.60 m) of 1" (2.5 cm) wide elastic. Optional appliqué: Lion, alligator and snowman - scrap pieces of fabrics, paper backed fusible web, tear-away material. Flowers - scrap pieces of Polarfleece® and tear-away material.