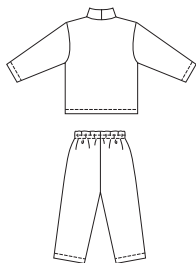


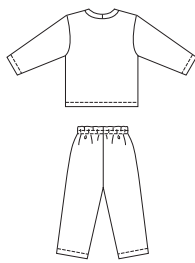


Toddlers' shirts, pants and shorts. Pull-over shirts have neckbands from self fabric or ribbing. View A has mock turtleneck and long sleeves. View B has crew neckband and long sleeves. View C has crew neckband and short sleeves. Pull-on pants and shorts have stitched elastic at waist. View A has front patch pockets with tucks. View C shorts have patch pockets with flaps and snap closures.

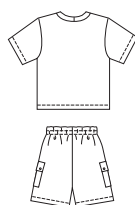
VIEW A Back



VIEW B Back



VIEW C Back



A



B



C

BABY & TODDLER

# KWIK & EASY

**KWIK•SEW®**  
price **2918**

SHIRT DESIGNED FOR STRETCH KNITS ONLY WITH 25% STRETCH

Suggested Fabrics: Interlock, jersey, textured knits

PANTS & SHORTS DESIGNED FOR MEDIUM WEIGHT WOVEN FABRICS

Suggested Fabrics: Cotton, cotton types, twill, gabardine, chino, lightweight denim, baby corduroy

TODDLERS' SHIRTS,

PANTS & SHORTS

Sizes: T1-T2-T3-T4

Size	T1	T2	T3	T4	
<b>Finished Length of Shirt at Center Back</b>					
View A, B & C	12 3/4 (32)	13 3/4 (35)	14 1/2 (37)	15 1/2 (39)	" (cm)
<b>Finished Inside Leg Seam</b>					
Pants View A & B	10 (25)	11 1/2 (29)	13 (33)	14 1/2 (37)	" (cm)
Shorts View C	3 (7)	3 1/2 (9)	4 (10)	4 1/2 (11)	" (cm)
<b>Material Required:</b>	Fabric requirement allows for nap, one-way design or shading. Extra fabric may be needed to match design or for shrinkage.				
<b>Fabric 60" (152 cm) Wide</b>					
Shirt View A, B & C	1/2 (0.50)	1/2 (0.50)	5/8 (0.60)	5/8 (0.60)	yd (m)
Pants View A & B	5/8 (0.60)	3/4 (0.70)	3/4 (0.70)	7/8 (0.80)	yd (m)
Shorts View C	1/2 (0.50)	1/2 (0.50)	1/2 (0.50)	1/2 (0.50)	yd (m)
<b>Fabric 45" (115 cm) Wide</b>					
Pants View A	5/8 (0.60)	3/4 (0.70)	7/8 (0.80)	1 (0.95)	yd (m)
Pants View B	5/8 (0.60)	3/4 (0.70)	3/4 (0.70)	7/8 (0.80)	yd (m)
Shorts View C	1/2 (0.50)	1/2 (0.50)	1/2 (0.50)	5/8 (0.60)	yd (m)

**Notions:** Thread. PANTS & SHORTS: 5/8 yd (0.60 m) of 1" (2.5 cm) wide elastic. SHORTS VIEW C: Four 1/2" (13 mm) snaps, scrap piece of fusible interfacing. SHIRT: Scrap piece of fusible interfacing. Optional Ribbing: VIEW A - 5" (13 cm), VIEW B & C - 3" (8 cm).