



KWIK•SEW®
2921 price

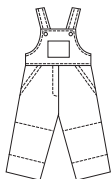
DOLL CLOTHES
 Fit 18" (45 cm) Dolls

OVERALLS

Overalls in three lengths have fake fly, bib pocket, back patch pockets, snaps or mini overall buckles at shoulder straps and topstitching details. Designed for light to medium weight woven or firm knit fabrics such as lightweight denim and cotton types.

Material Required: Full length overalls: 5/8 yd (0.60 m) of 24" (60 cm) wide fabric (minimum width). Capri or short overalls: 1/2 yd (0.50 m) of 24" (60 cm) wide fabric (minimum width).

Notions: Thread, mini overall buckle set or two 1/2" (13 mm) snaps.

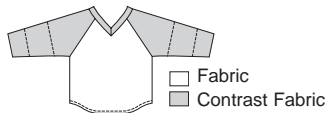


T-SHIRT

T-shirt has raglan sleeves in three lengths, V-neckline, Velcro® closure on back, shaped hemline and sleeves and neckband are from contrast fabric. Designed for stretch knits such as single knit, interlock and textured knits.

Material Required: Fabric and contrast fabric each 1/4 yd (0.25 m) of 20" (50 cm) wide (minimum width).

Notions: Thread, 5" (13 cm) of Velcro®.

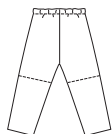


LEGGINGS

Pull-on leggings, without side seams, in ankle or shorts length have elastic waist. Designed for two-way stretch fabric with 75% stretch such as swimwear fabrics, cotton Lycra®, stretch velvet.

Material Required: Fabric 18" (46 cm) wide (minimum width) – Ankle length: 3/8 yd (0.35 m), Shorts: 1/4 yd (0.25 m).

Notions: Thread, 1/4 yd (0.25 m) of 3/8" (1 cm) wide elastic.



LEOTARD WITH SLEEVES & SKIRT

Leotards can be made with round neckline or collar. Leg openings are finished with elastic and back has Velcro® closure. Designed for two-way stretch fabric with 75% stretch such as swimwear fabric, cotton Lycra®, stretch velvet.

Material Required: 3/8 yd (0.35 m) of 36" (92 cm) wide fabric (minimum width):

Notions: Thread, 5" (13 cm) Velcro®, 15" (38 cm) of 1/4" (6 mm) wide elastic.



SLEEVELESS LEOTARD

Sleeveless leotard can be made with round neckline or collar. Leg openings are finished with elastic and back has Velcro® closure. Designed for two-way stretch fabric with 75% stretch such as swimwear fabric, cotton Lycra®, stretch velvet.

Material Required: 3/8 yd (0.35 m) of 16" (40 cm) wide fabric (minimum width).

Notions: Thread, 5" (13 cm) Velcro®, 15" (38 cm) of 1/4" (6 mm) wide elastic.



RAINCOAT

Raincoat has button or snap closure, front and back yoke flaps, collar and long sleeves. Designed for light to medium weight woven fabrics such as cotton, cotton types and windbreaker fabrics.

Material Required: 1/2 yd (0.50 m) of 45" (115 cm) wide fabric.

Notions: Thread, four 1/4" (6 mm) buttons or baby snaps, scrap piece of fusible interfacing.



RAIN HAT

Hat has four panel crown and shaped wide brim with topstitching detail. Designed for light to medium weight woven fabrics such as cotton, cotton types and windbreaker fabrics.

Material Required: 3/8 yd (0.35 m) of 16" (40 cm) wide fabric (minimum width).

Notions: Thread, scrap piece of fusible interfacing.



DRESS

Dress has double bodice, gathered skirt, gathered short sleeves with sleeve bands and Velcro® closure on back. Dress can be made with round neckline, Peter pan collar, or sailor collar and has optional ribbon trim. Designed for woven fabrics such as cotton types, gingham, calico, broadcloth, batiste, velvet, satin.

Material Required: 5/8 yd (0.60 m) of 45" (115 cm) wide fabric, scrap piece of contrast fabric for collar.

Notions: Thread, 6" (15 cm) of Velcro®, ribbon for the tie (optional), narrow ribbon for dress with sailor collar.



Legend for fabric and contrast fabric.