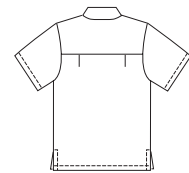




MEN'S

Men's shirts and hat. Shirt has extended shoulders, yoke, convertible collar and short sleeves. View A has side hemline slits and pocket. View B has shirt tail hemline and pockets. Hat has crown, side panel and brim has topstitching detail.

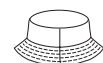
VIEW A Back



VIEW B Back



HAT



KWIK•SEW®
price **2935**

DESIGNED FOR LIGHTWEIGHT WOVEN FABRICS

Suggested Fabrics: Cotton, cotton types, broadcloth, chambray, challis, rayon blends
Hat also in denim, twill, corduroy

MEN'S SHIRTS & HAT

Shirt Sizes: S-M-L-XL-XXL
Hat Sizes: S-M-L-XL

Size	S	M	L	XL	XXL	
Head Circumference	21 (53)	22 (56)	23 (58)	24 (61)		" (cm)
Finished Length of Shirt at Center Back						
View A	28 1/4 (72)	29 1/4 (74)	30 1/4 (76)	31 (79)	32 (81)	" (cm)
View B	29 (73)	30 (76)	30 3/4 (78)	31 3/4 (80)	32 1/2 (83)	" (cm)
Material Required: Fabric requirement allows for nap, one-way design or shading. Extra fabric may be needed to match design or for shrinkage.						
Fabric 60" (152 cm) Wide						
View A & B	1 7/8 (1.75)	1 7/8 (1.75)	2 (1.85)	2 (1.85)	2 (1.85)	yd (m)
Hat	5/8 (0.60)	5/8 (0.60)	5/8 (0.60)	5/8 (0.60)		yd (m)
Fabric 45" (115 cm) Wide						
View A & B	2 3/8 (2.20)	2 3/8 (2.20)	2 1/2 (2.30)	2 5/8 (2.40)	2 3/4 (2.55)	yd (m)
Hat	3/4 (0.70)	3/4 (0.70)	3/4 (0.70)	3/4 (0.70)		yd (m)
Fusible Interfacing 24" (60 cm) Wide						
View A & B	7/8 (0.80)	7/8 (0.80)	1 (0.95)	1 (0.95)	1 (0.95)	yd (m)
Hat	3/4 (0.70)	3/4 (0.70)	3/4 (0.70)	3/4 (0.70)		yd (m)
Notions: Thread. VIEW A: Six 5/8" (15 mm) buttons. VIEW B: Eight 5/8" (15 mm) buttons.						