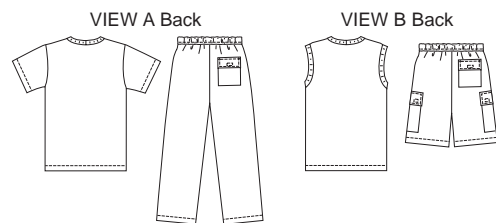




Men's shirts, cropped pants and shorts. Shirts have ribbing neckband. View A has short sleeves, View B is sleeveless and has armhole bands from ribbing. Pants and shorts have fly zipper, front side pockets, back pockets with flap and Velcro® closure. Waistband has elastic, drawstring and Velcro® closure. View B shorts have patch pockets at sides with pleats, flaps and Velcro® closures.



**KWIK·SEW®**  
**2936** price

**MEN'S SHIRTS, SHORTS & PANTS**  
 Sizes: S-M-L-XL-XXL

**SHIRTS DESIGNED FOR STRETCH KNITS ONLY WITH 25% STRETCH**  
 Suggested Fabrics: Interlock, textured knits, thermal knits, jersey

**PANTS & SHORTS DESIGNED FOR LIGHT TO MEDIUM WEIGHT WOVEN FABRICS**  
 Suggested Fabrics: Cotton, cotton types, poplin, windbreaker fabric, denim, twill, chino

Size	S	M	L	XL	XXL	
<b>Finished Length of Shirt at Center Back</b>						
View A & B	27 (69)	28 (71)	29 (74)	30 (76)	31 (79)	" (cm)
<b>Finished Inside Leg Seam</b>						
View A	24" (61 cm) - All Sizes					
View B	10" (25 cm) - All Sizes					
<b>Material Required:</b>	Fabric requirement allows for nap, one-way design or shading. Extra fabric may be needed to match design or for shrinkage.					
<b>Fabric 60" (152 cm) Wide</b>						
Pants View A	1 1/2 (1.40)	1 5/8 (1.50)	2 (1.85)	2 (1.85)	2 1/4 (2.10)	yd (m)
Shorts View B	1 1/2 (1.40)	1 1/2 (1.40)	1 5/8 (1.50)	1 5/8 (1.50)	2 (1.85)	yd (m)
Shirt View A	1 1/4 (1.15)	1 1/4 (1.15)	1 3/8 (1.30)	1 3/8 (1.30)	1 1/2 (1.40)	yd (m)
Shirt View B	7/8 (0.80)	1 (0.95)	1 (0.95)	1 (0.95)	1 (0.95)	yd (m)
<b>Fabric 45" (115 cm) Wide</b>						
Pants View A	2 1/2 (2.30)	2 1/2 (2.30)	2 5/8 (2.40)	2 5/8 (2.40)	2 3/4 (2.55)	yd (m)
Shorts View B	2 (1.85)	2 1/8 (1.95)	2 1/4 (2.10)	2 1/4 (2.10)	2 3/8 (2.20)	yd (m)
<b>Fusible Interfacing 24" (60 cm) Wide</b>						
Pants View A	1/4 (0.25)	1/4 (0.25)	1/4 (0.25)	1/4 (0.25)	1/4 (0.25)	yd (m)
Shorts View B	3/8 (0.35)	3/8 (0.35)	3/8 (0.35)	1/2 (0.50)	1/2 (0.50)	yd (m)
<b>Ribbing 28" (70 cm) Wide</b>						
Shirt View A	1/8 (0.15)	1/8 (0.15)	1/8 (0.15)	1/8 (0.15)	1/8 (0.15)	yd (m)
Shirt View B	1/4 (0.25)	1/4 (0.25)	1/4 (0.25)	1/4 (0.25)	1/4 (0.25)	yd (m)

**Notions:** Thread. PANTS & SHORTS: One drawstring, two eyelets (optional), one 9" (23 cm) zipper for sizes S-M-L-XL; one 11" (28 cm) zipper for size XXL. Purchase suggested length of zipper or longer, zipper will be trimmed. VIEW A: 2" (5 cm) of 1 1/2" (4 cm) wide Velcro®. VIEW B: 5" (12 cm) of 1 1/2" (4 cm) wide Velcro®. SHIRT: Scrap piece of fusible interfacing.