

Misses' fitted cardigans and tops. Cardigan has long sleeves and front band with buttonhole and button closure. View A has self fabric belt. View A pull-over top has stand-up collar and hemmed armholes. View B pull-over top has boat neckline and neckline and armholes are hemmed.

Cardigan VIEW A Back

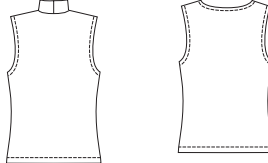


Cardigan VIEW B Back



Top VIEW A Back

Top VIEW B Back



KWIK•SEW
price **2948**

DESIGNED FOR STRETCH KNITS ONLY WITH 35% STRETCH ACROSS THE GRAIN
Suggested Fabrics: Interlock, textured knits, stretch velvet, stretch velour, fabric with spandex Lycra®, cotton Lycra®

MISSES' CARDIGANS & TOPS
Sizes: XS-S-M-L-XL

| Size | XS | S | M | L | XL | |
|---|-------------|---------|-------------|-------------|---------|--------|
| Finished Length at Center Back from Natural Neckline | | | | | | |
| Cardigan View A | 26 1/4 (66) | 27 (68) | 27 3/4 (70) | 28 1/4 (72) | 29 (73) | " (cm) |
| Cardigan View B | 21 1/4 (54) | 22 (56) | 22 1/2 (57) | 23 1/4 (59) | 24 (61) | " (cm) |
| Top View A & B | 20 1/4 (51) | 21 (53) | 21 1/2 (55) | 22 (56) | 23 (58) | " (cm) |

Material Required: Fabric requirement allows for nap, one-way design or shading. Extra fabric may be needed to match design or for shrinkage.

Fabric 60" (152 cm) Wide

| View | XS | S | M | L | XL | |
|----------------|--------------|--------------|--------------|--------------|--------------|--------|
| View A | | | | | | |
| Cardigan & Top | 2 3/8 (2.20) | 2 3/8 (2.20) | 2 1/2 (2.30) | 2 1/2 (2.30) | 2 5/8 (2.40) | yd (m) |
| Cardigan | 1 3/4 (1.60) | 1 3/4 (1.60) | 1 3/4 (1.60) | 1 7/8 (1.75) | 2 (1.85) | yd (m) |
| Top | 7/8 (0.80) | 7/8 (0.80) | 7/8 (0.80) | 1 (0.95) | 1 (0.95) | yd (m) |
| View B | | | | | | |
| Cardigan & Top | 2 1/8 (1.95) | 2 1/8 (1.95) | 2 1/8 (1.95) | 2 1/4 (2.10) | 2 1/4 (2.10) | yd (m) |
| Cardigan | 1 3/8 (1.30) | 1 1/2 (1.40) | 1 1/2 (1.40) | 1 1/2 (1.40) | 1 1/2 (1.40) | yd (m) |
| Top | 3/4 (0.70) | 3/4 (0.70) | 3/4 (0.70) | 3/4 (0.70) | 3/4 (0.70) | yd (m) |

Notions: Thread, scrap piece of fusible interfacing. CARDIGAN VIEW A: Six 1/2" (13 mm) buttons. CARDIGAN VIEW B: Five 1/2" (13 mm) buttons.