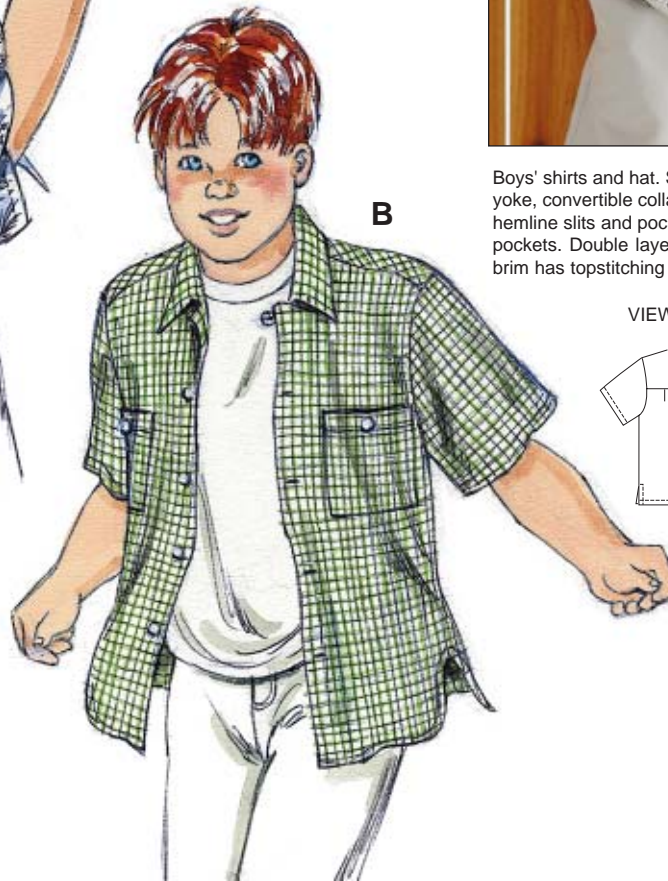




A



BOYS'

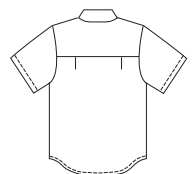


B

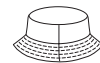
Boys' shirts and hat. Shirt has extended shoulders, double yoke, convertible collar and short sleeves. View A has side hemline slits and pocket. View B has shirt tail hemline and pockets. Double layer hat has crown, side panel and the brim has topstitching detail.

VIEW A Back

VIEW B Back



Hat Back



KWIK•SEW®
price **2951**

DESIGNED FOR LIGHTWEIGHT WOVEN FABRICS

Suggested Fabrics: Cotton, cotton types, broadcloth, chambray, challis, rayon and blends. HAT also in denim, twill, corduroy

BOYS' SHIRTS & HAT

Sizes: XS (4-5), S (6), M (7-8), L (10), XL (12-14)

Hat Sizes: S-M-L

Size	XS (4-5)	S (6)	M (7-8)	L (10)	XL (12-14)	
Height	42 (107)	46 (117)	50 (127)	55 (140)	60 (152)	" (cm)
Chest	23 1/2 (60)	25 (64)	26 1/2 (67)	28 1/2 (72)	31 (79)	" (cm)
Hip	24 (61)	25 1/2 (65)	27 1/2 (70)	30 (76)	32 (81)	" (cm)
Head Circumference	—	19 1/2 (49)	21 (53)	22 1/2 (57)	—	" (cm)
Finished Length of Shirt at Center Back						
View A	19 1/4 (49)	20 1/2 (52)	22 (56)	23 3/4 (60)	25 1/2 (65)	" (cm)
View B	19 3/4 (50)	21 (53)	22 3/4 (57)	24 1/4 (61)	26 (66)	" (cm)
Material Required: Fabric requirement allows for nap, one-way design or shading. Extra fabric may be needed to match design or for shrinkage.						
Fabric 60" (152 cm) Wide						
Shirt View A & B	1 1/8 (1.05)	1 1/8 (1.05)	1 1/4 (1.15)	1 1/4 (1.15)	1 3/8 (1.30)	yd (m)
Hat	—	1/2 (0.50)	1/2 (0.50)	5/8 (0.60)	—	yd (m)
Fabric 45" (115 cm) Wide						
Shirt View A & B	1 1/4 (1.15)	1 3/8 (1.30)	1 3/8 (1.30)	1 3/4 (1.60)	1 3/4 (1.60)	yd (m)
Hat	—	5/8 (0.60)	3/4 (0.70)	3/4 (0.70)	—	yd (m)
Fusible Interfacing 24" (60 cm) Wide						
Shirt View A & B	5/8 (0.60)	5/8 (0.60)	3/4 (0.70)	3/4 (0.70)	3/4 (0.70)	yd (m)
Hat	—	5/8 (0.60)	3/4 (0.70)	3/4 (0.70)	—	yd (m)

Notions: Thread. VIEW A: 5/8" (15 mm) buttons - five for sizes XS - S - M; six for sizes L-XL. VIEW B: 5/8" (15 mm) buttons - seven for sizes XS - S - M; eight for sizes L - XL.