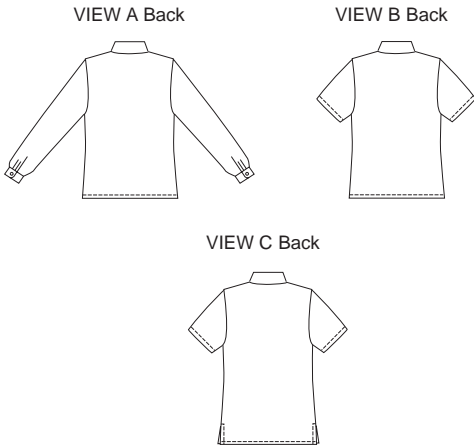
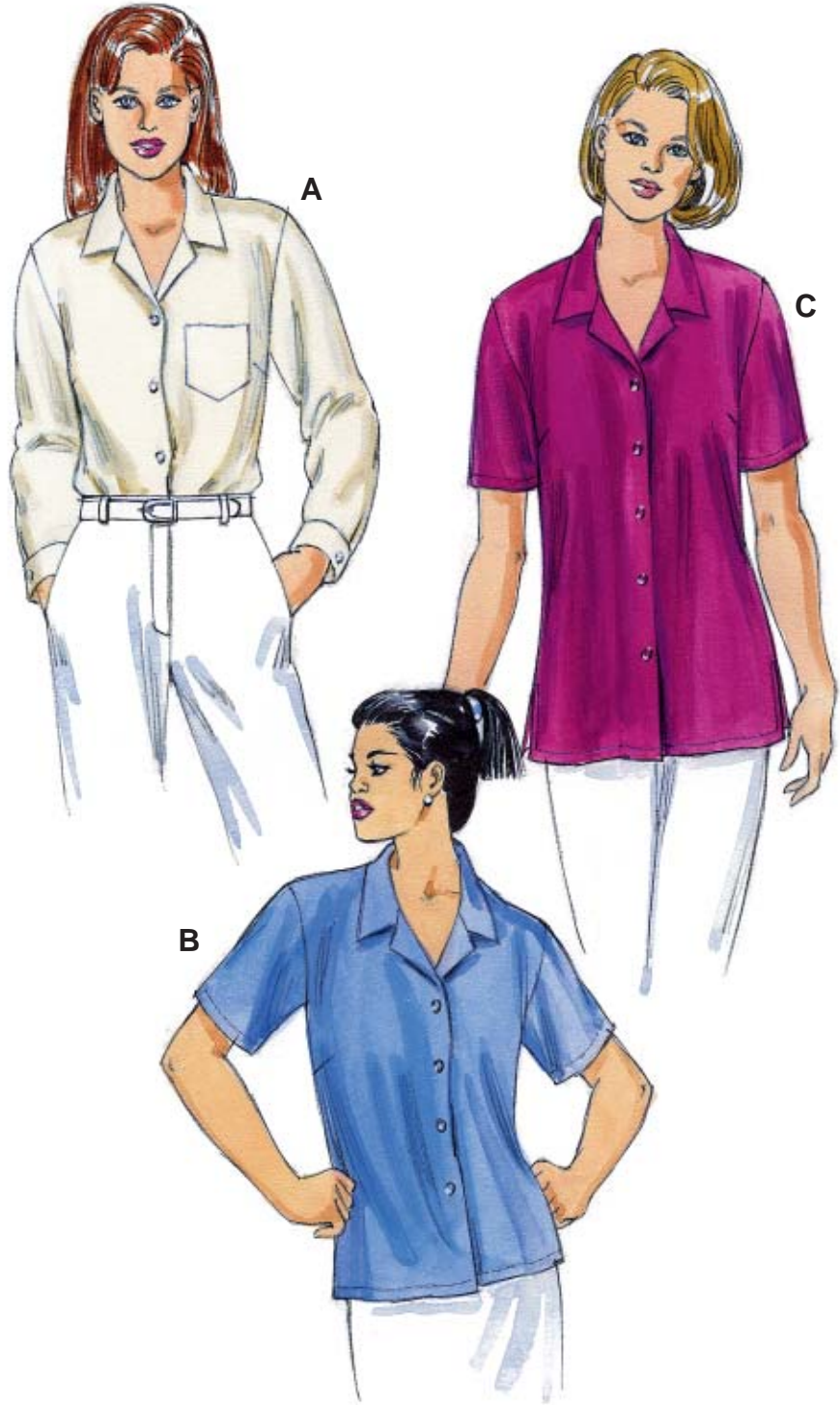




Misses' blouse has bust darts, collar and optional pocket. View A has long sleeves with cuffs. View B has short sleeves. View C has side hemline slits and short sleeves.



KWIK-SEW®
2952 price

MISSES' BLOUSES
 Sizes: XS-S-M-L-XL

DESIGNED FOR LIGHTWEIGHT WOVEN FABRICS

Suggested Fabrics: Cotton, cotton types, chambray, shirtings, silk-like fabrics, satin, challis, linen

Size	XS	S	M	L	XL	
Finished Length at Center Back						
View A & B	23 1/4 (59)	24 (61)	24 3/4 (62)	25 1/2 (64)	25 3/4 (65)	" (cm)
View C	27 (68)	27 3/4 (70)	28 3/4 (73)	29 1/2 (75)	30 1/2 (77)	" (cm)
Material Required:	Fabric requirement allows for nap, one-way design or shading. Extra fabric may be needed to match design or for shrinkage.					
Fabric 60" (152 cm) Wide						
View A	1 1/2 (1.40)	1 1/2 (1.40)	1 1/2 (1.40)	1 5/8 (1.50)	1 7/8 (1.75)	yd (m)
View B	1 1/4 (1.15)	1 1/4 (1.15)	1 1/2 (1.40)	1 1/2 (1.40)	1 5/8 (1.50)	yd (m)
View C	1 3/8 (1.30)	1 3/8 (1.30)	1 5/8 (1.50)	1 5/8 (1.50)	1 7/8 (1.75)	yd (m)
Fabric 45" (115 cm) Wide						
View A	2 (1.85)	2 1/8 (1.95)	2 1/4 (2.10)	2 1/4 (2.10)	2 3/8 (2.20)	yd (m)
View B	1 3/4 (1.60)	1 7/8 (1.75)	1 7/8 (1.75)	2 (1.85)	2 1/8 (1.95)	yd (m)
View C	2 (1.85)	2 1/8 (1.95)	2 1/8 (1.95)	2 1/4 (2.10)	2 1/4 (2.10)	yd (m)
Fusible Interfacing 24" (60 cm) Wide						
View A & B	3/4 (0.70)	7/8 (0.80)	7/8 (0.80)	7/8 (0.80)	7/8 (0.80)	yd (m)
View C	7/8 (0.80)	1 (0.95)	1 (0.95)	1 (0.95)	1 (0.95)	yd (m)

Notions: Thread. VIEW A: Six 5/8" (15 mm) buttons. VIEW B: Four 5/8" (15 mm) buttons. VIEW C: Five 5/8" (15 mm) buttons.