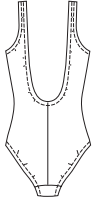


Misses' swimsuits have shelf bra lining with elastic, lined crotch, all outside edges finished with elastic and they can be made with regular or high cut leg openings. View A tank style has low cut back. View B has racing style back.

VIEW A Back



VIEW B Back



KWIK•SEW®
2962 price

MISSES' SWIMSUITS DESIGNED FOR TWO-WAY STRETCH FABRIC WITH 75% STRETCH
 Sizes: XS-S-M-L-XL Suggested Fabrics: Swimwear fabric with spandex Lycra®

| Size | XS | S | M | L | XL |
|--|------------|------------|------------|--------------|---------------------|
| Material Required: Fabric requirement allows for nap, one-way design or shading. Extra fabric may be needed to match design or for shrinkage. | | | | | |
| Fabric 60" (152 cm) Wide | | | | | |
| View A or B | 5/8 (0.60) | 5/8 (0.60) | 5/8 (0.60) | 3/4 (0.70) | 3/4 (0.70) yd (m) |
| Fabric 45" (115 cm) Wide | | | | | |
| View A or B | 3/4 (0.70) | 7/8 (0.80) | 7/8 (0.80) | 1 1/8 (1.05) | 1 1/4 (1.15) yd (m) |
| Swimwear Lining 18" (45 cm) Wide (minimum width) | | | | | |
| View A or B | 1/2 (0.50) | 5/8 (0.60) | 5/8 (0.60) | 3/4 (0.70) | 3/4 (0.70) yd (m) |
| Notions: Thread, 3/8" (1 cm) wide swimwear elastic - 4 yd (3.70 m) for sizes XS - S - M; 4 3/8 yd (4 m) for sizes L - XL, 3/4" (2 cm) wide swimwear elastic - 1/2 yd (0.50 m) for sizes XS - S - M; 5/8 yd (0.60 m) for sizes L - XL. | | | | | |