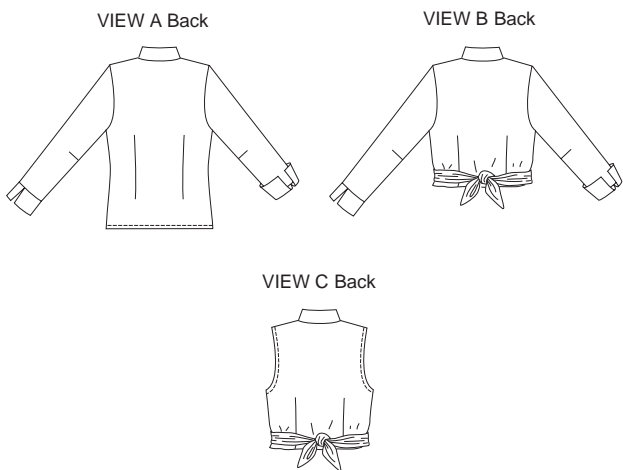




Misses' fitted shirts have bust darts, deep V-neckline, collar and collar stand. View A has three-quarter length sleeves with cuffs and button closure on front. View B and C have fronts extending for ties that wrap and tie in back. Ties, front and bottom edges are finished with narrow hems (wrong side of fabric will show). View B has three-quarter length sleeves with cuffs. View C is sleeveless and armholes are finished with self fabric bias cut bindings.



KWIK-SEW®
price **2966**

DESIGNED FOR LIGHTWEIGHT WOVEN FABRICS

Suggested Fabrics: Cotton, cotton types, challis, silk like fabrics, rayon and blends

MISSSES' SHIRTS

Sizes: XS-S-M-L-XL

Size	XS	S	M	L	XL	
Finished Length at Center Back						
View A	22 1/2 (57)	23 (58)	23 1/2 (59)	23 3/4 (60)	24 1/4 (61)	" (cm)
View B or C	17 1/2 (44)	18 (45)	18 1/2 (47)	19 (48)	19 3/4 (50)	" (cm)
Material Required: Fabric requirement allows for nap, one-way design or shading. Extra fabric may be needed to match design or for shrinkage.						
Fabric 60" (152 cm) Wide						
View A	1 3/8 (1.30)	1 1/2 (1.40)	1 1/2 (1.40)	1 5/8 (1.50)	1 5/8 (1.50)	yd (m)
View B	1 3/4 (1.60)	1 3/4 (1.60)	1 7/8 (1.75)	1 7/8 (1.75)	1 7/8 (1.75)	yd (m)
View C	1 1/4 (1.15)	1 1/4 (1.15)	1 1/4 (1.15)	1 3/8 (1.30)	1 1/2 (1.40)	yd (m)
Fabric 45" (115 cm) Wide						
View A	2 (1.85)	2 (1.85)	2 1/8 (1.95)	2 1/8 (1.95)	2 1/8 (1.95)	yd (m)
View B	1 7/8 (1.75)	2 (1.85)	2 1/8 (1.95)	2 1/4 (2.10)	2 3/8 (2.20)	yd (m)
View C	1 1/2 (1.40)	1 1/2 (1.40)	1 5/8 (1.50)	1 5/8 (1.50)	1 3/4 (1.60)	yd (m)
Fusible Interfacing 24" (60 cm) Wide						
View A	3/4 (0.70)	7/8 (0.80)	7/8 (0.80)	7/8 (0.80)	7/8 (0.80)	yd (m)
View B	1/2 (0.50)	1/2 (0.50)	1/2 (0.50)	1/2 (0.50)	1/2 (0.50)	yd (m)
View C	1/4 (0.25)	1/4 (0.25)	1/4 (0.25)	1/4 (0.25)	1/4 (0.25)	yd (m)

Notions: Thread. VIEW A: Four 1/2" (12 mm) buttons.