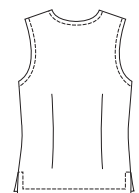
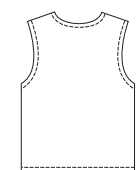


Misses' sleeveless tops in two lengths have bust darts, neckline and armholes finished with bias cut bindings, and button closures on fronts. View A and B have waist darts and side hemline slits. View C and D are cropped. View D has narrow trim or lace at neckline and armholes.

VIEW A & B Back



VIEW C Back



VIEW D Back



KWIK-SEW®
price **2976**

DESIGNED FOR LIGHTWEIGHT WOVEN FABRICS
Suggested Fabrics: Cotton, cotton types, silk, silk-like fabrics, linen, challis

MISSES' TOPS
Sizes: XS-S-M-L-XL

Size	XS	S	M	L	XL	
Finished Length at Center Back from natural neckline						
View A & B	22 1/4 (57)	22 3/4 (58)	23 1/2 (59)	24 (61)	24 1/2 (62)	" (cm)
View C & D	19 3/4 (50)	20 1/4 (51)	20 3/4 (53)	21 1/2 (54)	22 (56)	" (cm)
Material Required: Fabric requirement allows for nap, one-way design or shading. Extra fabric may be needed to match design or for shrinkage.						
Fabric 60" (152 cm) Wide						
View A	1 (0.95)	1 (0.95)	1 (0.95)	1 1/8 (1.05)	1 1/8 (1.05)	yd (m)
View B	1 (0.95)	1 1/8 (1.05)	1 1/8 (1.05)	1 1/4 (1.15)	1 3/8 (1.30)	yd (m)
View C	7/8 (0.80)	7/8 (0.80)	1 (0.95)	1 (0.95)	1 (0.95)	yd (m)
View D	1 (0.95)	1 (0.95)	1 1/8 (1.05)	1 1/8 (1.05)	1 1/4 (1.15)	yd (m)
Fabric 45" (115 cm) Wide						
View A	1 1/8 (1.05)	1 1/2 (1.40)	1 5/8 (1.50)	1 5/8 (1.50)	1 3/4 (1.60)	yd (m)
View B	1 1/8 (1.05)	1 1/2 (1.40)	1 5/8 (1.50)	1 5/8 (1.50)	1 3/4 (1.60)	yd (m)
View C	1 (0.95)	1 3/8 (1.30)	1 1/2 (1.40)	1 1/2 (1.40)	1 5/8 (1.50)	yd (m)
View D	1 1/8 (1.05)	1 3/8 (1.30)	1 1/2 (1.40)	1 1/2 (1.40)	1 5/8 (1.50)	yd (m)
Fusible Interfacing 24" (60 cm) Wide						
Views A, B, C & D	1/8 (0.15)	1/8 (0.15)	1/8 (0.15)	1/8 (0.15)	1/8 (0.15)	yd (m)
Notions: Thread. VIEW A: Six 5/8" (15 mm) buttons. VIEW B & C: Five 5/8" (15 mm) buttons. VIEW D: Five 5/8" (15 mm) buttons, Trim or Lace 3/8" - 5/8" (10 mm - 15 mm) wide - 2 1/8 yd (1.95 m) for sizes XS - S - M; 2 3/8 yd (2.20 m) for sizes L - XL.						