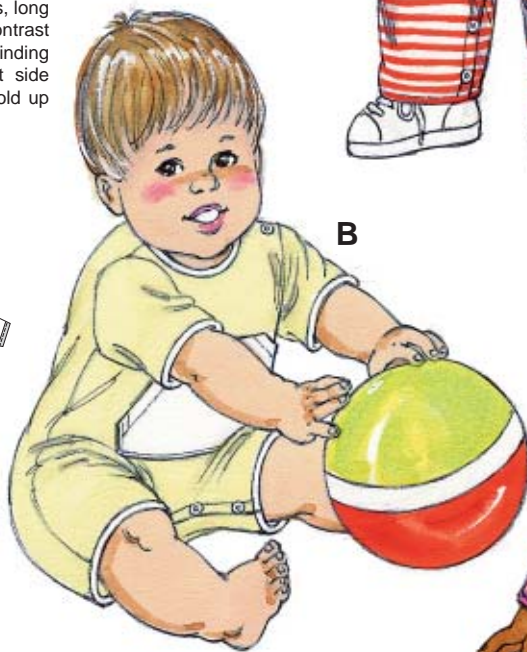
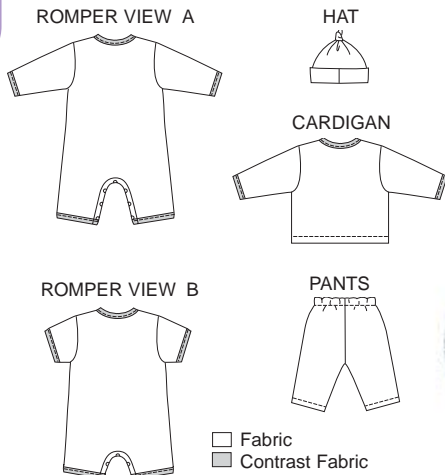


Rompers View A and B have snap closures on left shoulder and inside legs, contrast bindings on neckline, bottom edges of sleeves and legs. View A has long sleeves, long legs, and applique. View B has short sleeves and contrast pocket. Cardigan has snap closure and contrast binding on neckline and sleeves. Pull-on pants, without side seams, have elastic in casing at waist. Hat has fold up cuff and ties in a knot at top edge.



KWIK•SEW®
2978 price

**BABY ROMPERS, CARDIGAN,
 PANTS & HAT**
 Sizes: XS-S-M-L-XL

DESIGNED FOR STRETCH KNITS ONLY WITH 25% STRETCH
 Suggested Fabrics: Interlock, stretch terry, velour

Size	XS	S	M	L	XL	
Finished Length of Cardigan at Center Back	9 3/4 (25)	10 3/4 (27)	11 3/4 (30)	12 3/4 (32)	13 3/4 (35)	" (cm)
Material Required: Fabric requirement allows for nap, one-way design or shading. Extra fabric may be needed to match design or for shrinkage.						
Fabric 60" (152 cm) Wide						
Romper View A	5/8 (0.60)	3/4 (0.70)	3/4 (0.70)	7/8 (0.80)	7/8 (0.80)	yd (m)
Contrast	1/8 (0.15)	1/8 (0.15)	1/8 (0.15)	1/8 (0.15)	1/8 (0.15)	yd (m)
Romper View B	5/8 (0.60)	5/8 (0.60)	5/8 (0.60)	3/4 (0.70)	3/4 (0.70)	yd (m)
Contrast	1/4 (0.25)	1/4 (0.25)	1/4 (0.25)	1/4 (0.25)	1/4 (0.25)	yd (m)
Cardigan	3/8 (0.35)	1/2 (0.50)	1/2 (0.50)	1/2 (0.50)	1/2 (0.50)	yd (m)
Contrast	1/8 (0.15)	1/8 (0.15)	1/8 (0.15)	1/8 (0.15)	1/8 (0.15)	yd (m)
Pants	1/2 (0.50)	1/2 (0.50)	5/8 (0.60)	5/8 (0.60)	5/8 (0.60)	yd (m)
Hat	3/8 (0.35)	3/8 (0.35)	3/8 (0.35)	3/8 (0.35)	1/2 (0.50)	yd (m)

Notions: Thread. VIEW A ROMPER: Scrap piece of fusible interfacing, baby snaps – seven for size XS, nine for sizes S - M - L; eleven for size XL. Appliqué – scrap pieces of fabrics, paper backed fusible web, tear-away material. VIEW B ROMPER: Scrap piece of fusible interfacing, six baby snaps. CARDIGAN: Scrap piece of fusible interfacing 2" x 14" (5 cm x 36 cm), baby snaps – four for sizes XS - S - M; five for sizes L - XL. PANTS: 3/8" (1 cm) wide elastic – 1/2 yd (0.50 m).