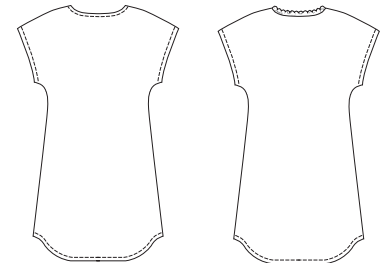


Misses' pullover gowns have shaped hemlines and front and back extends to form cap sleeves. Gown is cut on bias when using woven fabrics. View A neckline is finished with self fabric binding and lace appliqué. View B neckline is finished with narrow lace.

VIEW A Back

VIEW B Back



KWIK & EASY

KWIK•SEW®
price **2981**

DESIGNED FOR SOFT LIGHTWEIGHT WOVEN AND KNIT FABRICS

Suggested Fabrics: Silk, silk like fabrics, crepe de chine, batiste, charmeuse, single knit, nylon tricot

MISSES' GOWNS
Sizes: XS-S-M-L-XL

Size	XS	S	M	L	XL	
Finished Length at Center Back						
View A & B	31 (79)	32 (81)	33 (83)	34 (86)	35 (89)	" (cm)
NOTE: When using woven fabrics, finished length may vary due to bias cut.						
Material Required: Fabric requirement allows for nap, one-way design or shading. Extra fabric may be needed to match design or for shrinkage.						
Knit Fabric 60" (152 cm) Wide						
View A & B	1 1/8 (1.05)	1 1/8 (1.05)	1 1/8 (1.05)	2 1/8 (1.95)	2 1/4 (2.10)	yd (m)
Woven Fabric 60" (152 cm) Wide						
View A & B	1 1/2 (1.40)	1 5/8 (1.50)	1 3/4 (1.60)	1 7/8 (1.75)	2 (1.85)	yd (m)
Woven Fabric 45" (115 cm) Wide						
View A & B	1 3/4 (1.60)	1 7/8 (1.75)	2 1/8 (1.95)	2 1/4 (2.10)	2 3/8 (2.20)	yd (m)
Notions: Thread. VIEW A: Lace appliqué. VIEW B: 1 yd (0.95 m) of 3/8" - 3/4" (1 cm - 2 cm) wide edging lace.						