



Misses' Palazzo Pants and Tops. Pants are fitted at hips and have wide flared legs, zipper at center back, and waist finished with facing. Close fitting pullover tops have round neckline, cap sleeves and shaped hemline. All outside edges are finished with fabric bindings. View A has self fabric bindings. View B has bindings from contrast fabric.

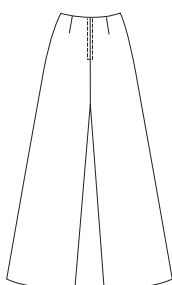
VIEW A Back

VIEW B Back



PANTS Back

□ Fabric  
■ Contrast Fabric



# KWIK & EASY

**KWIK•SEW®**  
price **2990**

PANTS

**PANTS DESIGNED FOR MEDIUM WEIGHT WOVEN AND FIRM KNIT FABRICS**

Suggested Fabrics: Gabardine, satin, crepe, linen, rayon & blends, double knit

**TOPS DESIGNED FOR STRETCH KNITS ONLY WITH 35% STRETCH**

Suggested Fabrics: Interlock, textured knits, stretch lace, stretch velour, panne

**MISSSES' PANTS & TOPS**

Sizes: XS-S-M-L-XL

Size	XS	S	M	L	XL	
<b>Finished Length of Top at Center Back</b>						
View A or B	21 (53)	21 3/4 (55)	22 1/4 (57)	22 3/4 (58)	23 1/2 (60)	" (cm)
<b>Finished Inside Leg Seam</b>						
	30 1/2 (77)	30 1/2 (77)	30 1/2 (77)	30 1/2 (77)	30 1/2 (77)	" (cm)
<b>Finished Width at Bottom Edge of Leg</b>						
	27 1/2 (70)	28 1/2 (72)	29 1/2 (75)	30 1/2 (77)	31 1/4 (79)	" (cm)
<b>Material Required:</b>	Fabric requirement allows for nap, one-way design or shading. Extra fabric may be needed to match design or for shrinkage.					
<b>Fabric 60" (152 cm) Wide</b>						
Top View A	7/8 (0.80)	7/8 (0.80)	7/8 (0.80)	7/8 (0.80)	7/8 (0.80)	yd (m)
Top View B Fabric	3/4 (0.70)	3/4 (0.70)	3/4 (0.70)	3/4 (0.70)	7/8 (0.80)	yd (m)
Contrast Fabric	1/4 (0.25)	1/4 (0.25)	1/4 (0.25)	1/4 (0.25)	1/4 (0.25)	yd (m)
Pants	2 1/4 (2.10)	2 1/4 (2.10)	2 3/8 (2.20)	2 1/2 (2.30)	2 5/8 (2.40)	yd (m)
<b>Fabric 45" (115 cm) Wide</b>						
Pants	2 1/2 (2.30)	2 5/8 (2.40)	2 5/8 (2.40)	2 3/4 (2.55)	2 7/8 (2.65)	yd (m)
<b>Fusible Interfacing 24" (60 cm) Wide</b>						
Pants	1/4 (0.25)	1/4 (0.25)	1/4 (0.25)	1/4 (0.25)	1/4 (0.25)	yd (m)
<b>Notions:</b>	Thread. PANTS: One 7" (18 cm) zipper, hook & eye.					