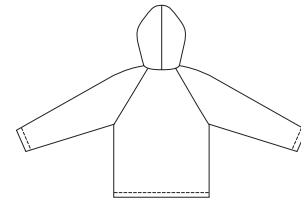
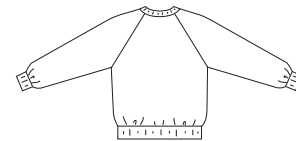


Misses' semi-fitted raglan sleeve jackets have zipper front, front facings and patch pockets. View A has hood with optional drawstring, hemmed bottom edge and sleeves. View B has neckband, waistband and cuffs from ribbing.

VIEW A Back



VIEW B Back



KWIK•SEW®
2993 price

MISSES' JACKETS DESIGNED FOR HEAVYWEIGHT STRETCH KNITS
 Sizes: XS-S-M-L-XL Suggested Fabrics: Sweatshirt fleece, Polarfleece®, French terry, double knit

Size	XS	S	M	L	XL	
Finished Length at Center Back						
Views A & B	20 3/4 (52)	20 3/4 (52)	20 3/4 (52)	23 (58)	23 (58)	" (cm)
Material Required:	Fabric requirement allows for nap, one-way design or shading. Extra fabric may be needed to match design or for shrinkage.					
Fabric 60" (152 cm) Wide						
View A	1 1/2 (1.40)	1 1/2 (1.40)	1 5/8 (1.50)	1 3/4 (1.60)	1 3/4 (1.60)	yd (m)
View B	1 1/8 (1.05)	1 1/4 (1.15)	1 1/4 (1.15)	1 3/8 (1.30)	1 3/8 (1.30)	yd (m)
Ribbing 28" (70 cm) Wide						
View B	1/2 (0.50)	1/2 (0.50)	1/2 (0.50)	1/2 (0.50)	1/2 (0.50)	yd (m)
Notions:	Thread. One separating zipper - 18" (45 cm) for sizes XS - S - M; 20" (50 cm) for sizes L - XL, scrap piece of interfacing. View A: One drawstring for hood (optional).					