

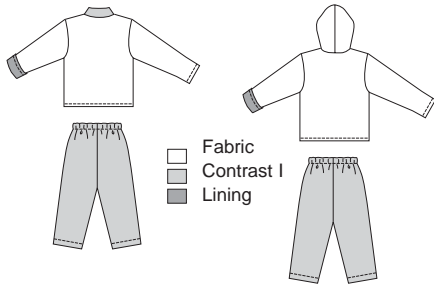


Toddlers' jackets and pants. Pants, without side seams, have elastic in casing at waist. Lined jacket has fold up sleeves (lining will show), extended shoulders, and front button closure. View A jacket has collar and patch pockets from contrast fabrics. View B jacket has hood. Star, moon, car and truck appliques are included.



VIEW A Back

VIEW B Back



KWIK-SEW®
2994 price

TODDLERS' JACKETS & PANTS

Sizes: T1-T2-T3-T4

DESIGNED FOR HEAVYWEIGHT STRETCH KNITS

Suggested Fabrics: Polarfleece®, heavy sweatshirt fleece

LINING IN LIGHTWEIGHT KNIT OR WOVEN FABRICS such as single knit, interlock, flannel, cotton types

Size	T1	T2	T3	T4	
Finished Length of Jacket at Center Back					
Views A & B	13 1/2 (34)	14 1/2 (36)	15 1/2 (39)	16 1/2 (41)	" (cm)
Finished Inside Leg Seam	10 1/4 (26)	11 3/4 (30)	13 1/4 (33)	14 3/4 (37)	" (cm)
Material Required: Fabric requirement allows for nap, one-way design or shading. Extra fabric may be needed to match design or for shrinkage.					
Fabric 60" (152 cm) Wide					
View A Fabric	1/2 (0.50)	1/2 (0.50)	5/8 (0.60)	3/4 (0.70)	yd (m)
Contrast I Pants & Collar	5/8 (0.60)	3/4 (0.70)	3/4 (0.70)	7/8 (0.80)	yd (m)
Contrast II & III Pockets	1/4 (0.25)	1/4 (0.25)	1/4 (0.25)	1/4 (0.25)	yd (m)
View B Fabric	3/4 (0.70)	3/4 (0.70)	7/8 (0.80)	7/8 (0.80)	yd (m)
Contrast I	5/8 (0.60)	3/4 (0.70)	3/4 (0.70)	7/8 (0.80)	yd (m)
Lining 60" (152 cm) Wide					
View A	5/8 (0.60)	5/8 (0.60)	5/8 (0.60)	3/4 (0.70)	yd (m)
View B	3/4 (0.70)	3/4 (0.70)	7/8 (0.80)	7/8 (0.80)	yd (m)
Lining 45" (115 cm) Wide					
View A	7/8 (0.80)	1 (0.95)	1 (0.95)	1 1/8 (1.05)	yd (m)
View B	7/8 (0.80)	1 (0.95)	1 (0.95)	1 1/4 (1.15)	yd (m)
Fusible Interfacing 24" (60 cm) Wide					
Views A & B	1/2 (0.50)	1/2 (0.50)	1/2 (0.50)	5/8 (0.60)	yd (m)

Notions: Thread. JACKET: 3/4" (20 mm) buttons - three for sizes T1 & T2, four for sizes T3 & T4. View B Appliqué: Scrap pieces of fabrics, paper backed fusible web, tear away material. PANTS: 5/8 yd (0.60 m) of 1" (2.5 cm) wide elastic.