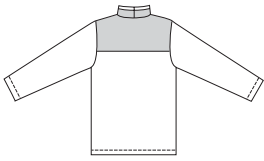


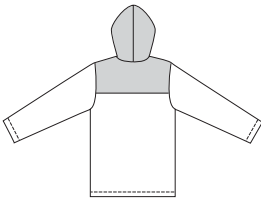


Unisex pull-over shirts have extended shoulders and contrast front and back yokes. View A has zipper pocket in front yoke seam. View B has lined hood and zipper on hood and front yoke.

VIEW A Back



VIEW B Back



KWIK•SEW®
3001 price

UNISEX SHIRTS
 Sizes: XS-S-M-L-XL

DESIGNED FOR HEAVYWEIGHT STRETCH KNITS
 Suggested Fabrics: Polarfleece®, Berber fleece, sweatshirt fleece
 Lining: Lightweight knit or woven fabrics such as single knit, cotton, flannel

Size	XS	S	M	L	XL	
Body Measurements:						
Chest	33 (84)	36 (91)	39 (99)	42 (106)	45 (114)	" (cm)
Finished Length at Center Back						
View A or B	27 (69)	28 (71)	29 (74)	30 (76)	31 (79)	" (cm)
Material Required: Fabric requirement allows for nap, one-way design or shading. Extra fabric may be needed to match design or for shrinkage.						
Fabric 60" (152 cm) Wide						
View A	1 3/8 (1.30)	1 3/8 (1.30)	1 1/2 (1.40)	1 1/2 (1.40)	1 1/2 (1.40)	yd (m)
View B	1 3/8 (1.30)	1 3/8 (1.30)	1 3/8 (1.30)	1 1/2 (1.40)	1 1/2 (1.40)	yd (m)
Contrast Fabric						
View A	1/2 (0.50)	1/2 (0.50)	1/2 (0.50)	1/2 (0.50)	1/2 (0.50)	yd (m)
View B	5/8 (0.60)	5/8 (0.60)	5/8 (0.60)	3/4 (0.70)	3/4 (0.70)	yd (m)
Lining 45" (115 cm) or 60" (152 cm) Wide						
View B	3/4 (0.70)	3/4 (0.70)	3/4 (0.70)	3/4 (0.70)	3/4 (0.70)	yd (m)

Notions: Thread. View A: Piece of lining for pocket 8" x 8" (20 cm x 20 cm), one 5" (12 cm) zipper, scrap piece of fusible interfacing.
 View B: One zipper - 9" (22 cm) for sizes XS-S-M-L; 12" (30 cm) for size XL. Purchase suggested length of zipper or longer, zipper will be trimmed.