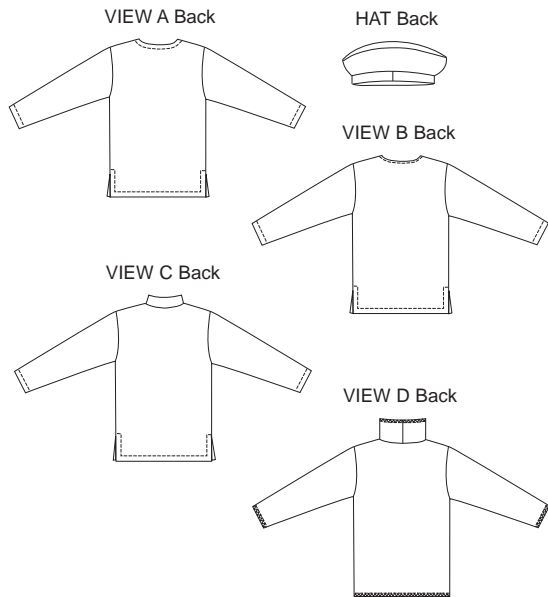




Women's pullover shirts and hat. View A shirt has V neckline finished with facings from contrast fabric, and side hemline slits. View B has hemmed round neckline and side hemline slits. View C has side hemline slits, stand up collar with front zipper and facing. View D has single layer collar, outer edges of collar, sleeves and bottom edge are finished with serger or zigzag stitches. Beret style hat is unlined.



PLUS SIZES

KWIK•SEW
price **3013**

PLUS SIZE

DESIGNED FOR HEAVYWEIGHT STRETCH KNITS ONLY

Suggested Fabrics: Polarfleece®, berber fleece, sweatshirt fleece

Contrast Fabric View A in lightweight woven fabrics such as flannel, cotton types

WOMEN'S SHIRTS & HAT

Sizes: 1X-2X-3X-4X

DUAL INSTRUCTION INCLUDED: SERGER (OVERLOCK) AND STANDARD SEWING MACHINES

Size	1X	2X	3X	4X	
Finished Length at Center Back from Natural Neckline					
All Views	30 (77)	31 (79)	32 (81)	33 (84)	" (cm)
Hat Fits Head Circumference	Small - 20 1/2 (52)	Medium - 22 (56)	Large - 23 1/2 (60)		
Material Required: Fabric requirement allows for nap, one-way design or shading. Extra fabric may be needed to match design or for shrinkage.					
Fabric 60" (152 cm) Wide					
View A	1 3/4 (1.60)	2 (1.85)	2 1/8 (1.95)	2 1/8 (1.95)	yd (m)
View B	1 3/4 (1.60)	2 (1.85)	2 1/8 (1.95)	2 1/8 (1.95)	yd (m)
View C	2 (1.85)	2 (1.85)	2 1/8 (1.95)	2 3/8 (2.20)	yd (m)
View D	1 7/8 (1.75)	2 (1.85)	2 1/8 (1.95)	2 1/4 (2.10)	yd (m)
HAT	1/2 yd (0.50 m) for All Sizes				
Contrast Fabric 14" (35 cm) Wide (minimum width)					
View A	3/8 (0.35)	3/8 (0.35)	3/8 (0.35)	3/8 (0.35)	yd (m)

Notions: Thread. Scrap piece of fusible interfacing. View C: one 9" (22 cm) zipper.