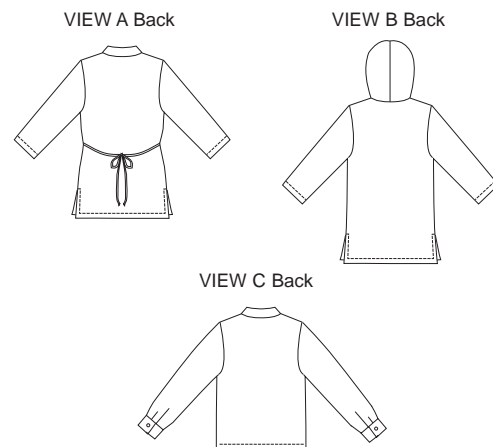




Women's tunics and blouse have bust darts. View A tunic has ties on back, V-neckline, collar, side hemline slits and three-quarter length sleeves. View B tunic has hood, three-quarter length sleeves, side hemline slits and stitched closure at bust. View C has collar and full length sleeves with cuffs.



PLUS SIZE

PLUS SIZES

KWIK•SEW®
price **3015**

DESIGNED FOR LIGHT TO MEDIUM WEIGHT WOVEN FABRICS
Suggested Fabrics: Cotton, cotton types, linen, rayon, challis, silk, silk types

WOMEN'S TUNICS & BLOUSE
Sizes: 1X-2X-3X-4X

Size	1X	2X	3X	4X	
Finished Length at Center Back from Natural Neckline					
View A & B	32 3/4 (83)	33 3/4 (85)	34 3/4 (88)	35 3/4 (91)	" (cm)
View C	26 1/2 (68)	27 1/4 (69)	28 (71)	28 3/4 (73)	" (cm)
Material Required: Fabric requirement allows for nap, one-way design or shading. Extra fabric may be needed to match design or for shrinkage.					
Fabric 60" (152 cm) Wide					
View A	2 1/2 (2.30)	2 1/2 (2.30)	2 5/8 (2.40)	2 5/8 (2.40)	yd (m)
View B	2 5/8 (2.40)	2 5/8 (2.40)	2 3/4 (2.55)	2 3/4 (2.55)	yd (m)
View C	2 3/8 (2.20)	2 3/8 (2.20)	2 3/8 (2.20)	2 3/8 (2.20)	yd (m)
Fabric 45" (115 cm) Wide					
View A	3 1/4 (3.00)	3 3/8 (3.10)	3 1/2 (3.20)	3 5/8 (3.35)	yd (m)
View B	3 1/8 (2.85)	3 1/4 (3.00)	3 1/4 (3.00)	3 3/8 (3.10)	yd (m)
View C	3 (2.75)	3 1/8 (2.85)	3 1/8 (2.85)	3 1/4 (3.00)	yd (m)
Fusible Interfacing 24" (60 cm) Wide					
View A	1 3/8 (1.30)	1 3/8 (1.30)	1 3/8 (1.30)	1 3/8 (1.30)	yd (m)
View C	1 1/8 (1.05)	1 1/8 (1.05)	1 1/8 (1.05)	1 1/8 (1.05)	yd (m)
Notions: Thread. View A: Five 5/8" (15 mm) buttons. View C: Six 5/8" (15 mm) buttons.					