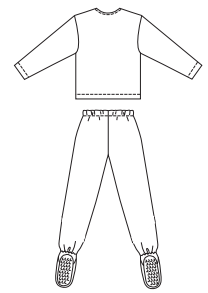
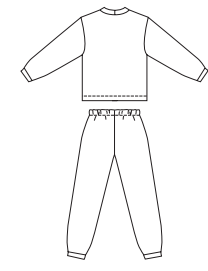




Boys' and Girls' pajamas. Pullover shirt has side hemline slits and full length sleeves. View A has self fabric neckband and cuffs. View B has hemmed neckline and sleeves. Pull-on pants, without side seams, have elastic waist. View A has self fabric cuffs on bottom edges of legs. View B has feet with gripper fabric on soles.

VIEW A Back

VIEW B Back



KWIK·SEW®
3016
 price **3017**

DESIGNED FOR MEDIUM TO HEAVYWEIGHT STRETCH KNITS WITH 20% STRETCH
 Suggested Fabrics: Polarfleece®, stretch velour, sweatshirt fleece, French terry, double knit

BOYS' & GIRLS' PAJAMAS
 3016 Sizes: 4-5-6-7
 3017 Sizes: 8-10-12-14

DUAL INSTRUCTION INCLUDED: SERGER (OVERLOCK) AND STANDARD SEWING MACHINES

Size	4	5	6	7	8	10	12	14	
Inside Leg to Floor	15 3/4 (40)	17 1/2 (44)	19 1/2 (49)	20 1/2 (52)	22 (56)	24 (61)	26 (66)	28 (71)	" (cm)
Finished Length of Shirt at Center Back from Natural Neckline									
View A & B	17 (43)	18 (45)	19 (48)	20 (50)	20 3/4 (52)	21 3/4 (55)	23 1/4 (59)	24 1/2 (62)	" (cm)
Material Required: Fabric requirement allows for nap, one-way design or shading. Extra fabric may be needed to match design or for shrinkage.									
Fabric 60" (152 cm) Wide									
View A	1 1/4 (1.15)	1 3/8 (1.30)	1 3/8 (1.30)	1 1/2 (1.40)	1 5/8 (1.50)	1 7/8 (1.75)	2 1/4 (2.10)	2 1/2 (2.30)	yd (m)
View B	1 3/8 (1.30)	1 1/2 (1.40)	1 5/8 (1.50)	1 3/4 (1.60)	1 3/4 (1.60)	1 7/8 (1.75)	2 1/8 (1.95)	2 1/2 (2.30)	yd (m)
Notions: Thread, 5/8 yd (0.60 m) of 3/4" (2 cm) wide elastic. View B: 1/2 yd (0.50 m) of 1/4" (6 mm) wide elastic, gripper fabric – 11" x 11" (28 cm x 28 cm) for sizes 4-7; 12" x 12" (30 cm x 30 cm) for sizes 8-14.									