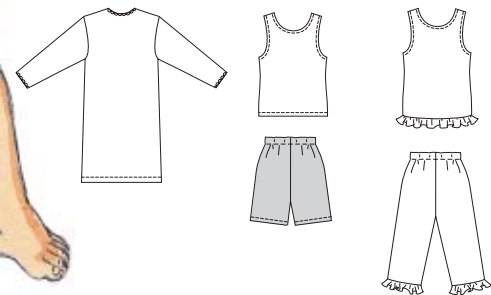


Girls' nightshirt and pajamas. View A pullover nightshirt has neckline and bottom of sleeves finished with stretch lace. View B and C pajamas have tank top with neckline and armholes finished with narrow hems. Pull-on pants, without side seams, have narrow elastic in casing at waist. View C has ruffles at bottom edges of Top and legs.

VIEW A Back VIEW B Back VIEW C Back



KWIK & EASY

KWIK·SEW®
3024
 price **3025**

DESIGNED FOR STRETCH KNITS ONLY WITH 20% STRETCH
 Suggested Fabrics: Interlock ,single knit, thermal knits, jersey

GIRLS' SLEEPWEAR
 3024 Sizes: 4-5-6-7
 3025 Sizes: 8-10-12-14

Size	4	5	6	7	8	10	12	14	
Finished Length at Center Back from Natural Neckline									
View A	24 1/2 (62)	26 (66)	27 3/4 (70)	29 1/2 (75)	30 3/4 (78)	32 3/4 (83)	35 (89)	37 (94)	" (cm)
View B & C Top	15 1/2 (39)	16 1/2 (42)	17 1/2 (44)	18 1/2 (47)	19 1/2 (49)	20 1/2 (52)	21 1/2 (54)	22 5/8 (57)	" (cm)
Finished Inside Leg Seam									
View B	5 (12)	5 3/4 (14)	6 3/8 (16)	6 5/8 (17)	7 1/4 (18)	8 (20)	8 1/2 (21)	9 1/4 (23)	" (cm)
View C	10 3/4 (27)	11 3/4 (30)	12 3/4 (32)	13 5/8 (34)	14 3/4 (37)	16 (40)	17 1/4 (43)	18 1/2 (47)	" (cm)
Material Required: Fabric requirement allows for nap, one-way design or shading. Extra fabric may be needed to match design or for shrinkage.									
Fabric 60" (152 cm) Wide									
View A	7/8 (0.80)	7/8 (0.80)	1 (0.95)	1 (0.95)	1 1/8 (1.05)	1 1/8 (1.05)	1 1/4 (1.15)	1 3/4 (1.60)	yd (m)
View B Top	5/8 (0.60)	5/8 (0.60)	5/8 (0.60)	5/8 (0.60)	3/4 (0.70)	3/4 (0.70)	3/4 (0.70)	3/4 (0.70)	yd (m)
View B Shorts	1/2 (0.50)	5/8 (0.60)	5/8 (0.60)	5/8 (0.60)	5/8 (0.60)	5/8 (0.60)	3/4 (0.70)	3/4 (0.70)	yd (m)
View C	1 (0.95)	1 (0.95)	1 1/8 (1.05)	1 1/4 (1.15)	1 1/2 (1.40)	1 5/8 (1.50)	1 5/8 (1.50)	1 7/8 (1.75)	yd (m)

Notions: Thread, scrap piece of fusible interfacing. View A: 1 yd (0.95 m) of 3/8"-5/8" (10 mm-15 mm) wide stretch lace. View B & C: 3/8" (10 mm) wide elastic - 5/8 yd (0.60 m) for sizes 4-7; 3/4 yd (0.70 m) for sizes 8-14.