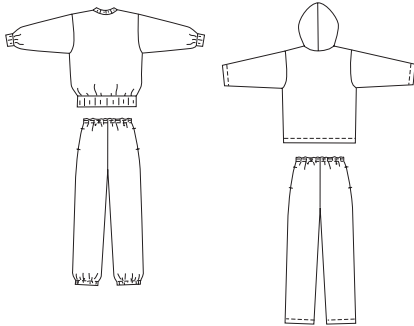


Men's shirts and pants. View A pullover shirt has extended shoulders, ribbing neckband, cuffs and waistband. View B has zipper on front, hood with drawstring, patch pockets, and drawstring at bottom edge. Pull-on pants have pockets in side seams and stitched elastic at waist with drawstring on inside. View A has stitched elastic at bottom edges of legs, View B are hemmed.

VIEW A Back

VIEW B Back



KWIK•SEW®
3028 price

KWIK & EASY

MEN'S SHIRTS & PANTS

DESIGNED FOR STRETCH KNITS ONLY

Sizes: S-M-L-XL-XXL

Suggested Fabrics: Sweatshirt fleece, French terry, Polarfleece®, double knit

Size	S	M	L	XL	XXL	
Finished Length of Shirt at Center Back						
Views A & B	25 (64)	26 (66)	27 (69)	28 (71)	29 (74)	" (cm)
Finished Inside Leg Seam						
View A & B	30 1/2" (77 cm) All Sizes					" (cm)
Material Required:	Fabric requirement allows for nap, one-way design or shading. Extra fabric may be needed to match design or for shrinkage.					
Fabric 60" (152 cm) Wide						
View A	2 3/4 (2.55)	3 5/8 (3.35)	3 3/4 (3.45)	3 7/8 (3.55)	4 1/4 (3.90)	yd (m)
View B	3 3/8 (3.10)	3 7/8 (3.55)	3 7/8 (3.55)	4 (3.70)	4 1/2 (4.15)	yd (m)
Ribbing 28" (70 cm) Wide						
View A	20 (50)	20 (50)	20 (50)	20 (50)	20 (50)	" (cm)

Notions: Thread, 1 1/8 yd (1 m) of 1 1/2" (4 cm) wide elastic, scrap of fusible interfacing. View A: 7/8 yd (0.80 m) of 1" (2.5 cm) wide elastic, one drawstring. View B: One separating zipper - 24" (60 cm) for sizes S & M, 26" (65 cm) for sizes L - XL - XXL, three drawstrings. Purchase suggested length of zipper or longer - zipper will be trimmed.