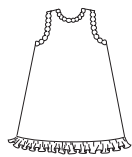




Toddler's sleepwear. View A nightgown has neckline and armholes finished with stretch lace, and ruffle at bottom edge. View B, C, D and E pants, without side seams, have elastic waist. View B tank top has neckline and armholes finished with narrow hems and pants and top have ruffles at bottom edges. View C tank top has neckline and armholes finished with narrow hems. View D shirt has V-neckline and short sleeves. View E shirt has round neckline with ribbing neckband, short sleeves, and contrast front and back.

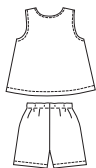
VIEW A Back



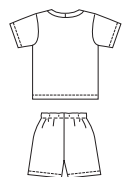
VIEW B Back



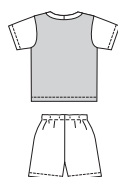
VIEW C Back



VIEW D Back



VIEW E Back



□ Fabric
 ■ Contrast

KWIK·SEW®
3034 price

KWIK & EASY

TODDLERS' SLEEPWEAR DESIGNED FOR STRETCH KNITS ONLY WITH 20% STRETCH
 Sizes: T1-T2-T3-T4 Suggested Fabrics: Single knit, interlock, thermal knit, pointelle

Size	T1	T2	T3	T4	
Finished Length at Center Back from Natural Neckline					
View A	20 1/2 (52)	22 (56)	24 (61)	25 1/2 (65)	" (cm)
View B, C & D	13 (33)	14 (36)	15 (38)	16 (41)	" (cm)
Finished Inside Leg Seam					
View B	5 3/4 (14)	6 1/2 (16)	7 1/4 (18)	8 1/4 (21)	" (cm)
View C, D & E	1 3/4 (4)	2 1/4 (5)	2 1/2 (6)	2 3/4 (7)	" (cm)
Material Required: Fabric requirement allows for nap, one-way design or shading. Extra fabric may be needed to match design or for shrinkage.					
Fabric 60" (152 cm) Wide					
View A	3/4 (0.70)	3/4 (0.70)	7/8 (0.80)	7/8 (0.80)	yd (m)
View B, C & D	7/8 (0.80)	7/8 (0.80)	1 (0.95)	1 (0.95)	yd (m)
View E Fabric	1/2 (0.50)	1/2 (0.50)	1/2 (0.50)	1/2 (0.50)	yd (m)
Contrast	1/2 (0.50)	1/2 (0.50)	5/8 (0.60)	5/8 (0.60)	yd (m)
Ribbing 28" (70 cm) Wide					
View E	3 (8)	3 (8)	3 (8)	3 (8)	" (cm)

Notions: Thread, scrap piece of fusible interfacing. View A: 1 1/4 yd (1.15 m) of 3/8" - 5/8" (10 mm - 15 mm) wide stretch lace. View A, B & C: Optional bow. View B, C, D & E: 1/2 yd (0.50 m) of 3/8" (10 mm) wide elastic.