



A



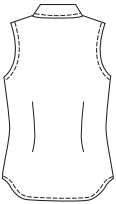
C



B

Misses' fitted shirt has bust darts, collar and collar stand and armholes are finished with self fabric bias cut bindings. Views A and B have waist darts on front and back, front tabs, and shaped hemline. View B has shaped front and back yoke overlay cut on bias. View C has front edges finished with fold back facings, and side hemline slits.

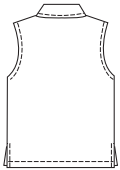
VIEW A Back



VIEW B Back



VIEW C Back



**KWIK•SEW®**  
**3038** price

**MISSES' SHIRTS**  
Sizes: XS-S-M-L-XL

DESIGNED FOR LIGHTWEIGHT WOVEN FABRICS

Suggested Fabrics: Cotton, cotton types, chambray, broadcloth, satin, shirtings, silk, silk-like fabrics, linen

Size	XS	S	M	L	XL	
<b>Finished Length at Center Back</b>						
Views A & B	24 1/4 (61)	25 (63)	25 3/4 (65)	26 1/2 (67)	27 1/4 (69)	" (cm)
View C	20 (51)	20 1/2 (52)	21 (53)	21 3/4 (55)	22 1/4 (61)	" (cm)
<b>Material Required:</b> Fabric requirement allows for nap, one-way design or shading. Extra fabric may be needed to match design or for shrinkage.						
<b>Fabric 60" (152 cm) Wide</b>						
View A	1 1/8 (1.05)	1 1/8 (1.05)	1 1/8 (1.05)	1 1/8 (1.05)	1 1/8 (1.05)	yd (m)
View B	1 1/8 (1.05)	1 1/8 (1.05)	1 1/4 (1.15)	1 1/4 (1.15)	1 3/8 (1.30)	yd (m)
View C	1 (0.95)	1 (0.95)	1 (0.95)	1 (0.95)	1 (0.95)	yd (m)
<b>Fabric 45" (115 cm) Wide</b>						
View A	1 1/4 (1.15)	1 3/8 (1.30)	1 3/8 (1.30)	1 5/8 (1.50)	1 3/4 (1.60)	yd (m)
View B	1 3/8 (1.30)	1 1/2 (1.40)	1 5/8 (1.50)	1 3/4 (1.60)	1 7/8 (1.75)	yd (m)
View C	1 1/4 (1.15)	1 1/4 (1.15)	1 1/4 (1.15)	1 3/8 (1.30)	1 1/2 (1.40)	yd (m)
<b>Fusible Interfacing 24" (60 cm) Wide</b>						
Views A & B	3/4 (0.70)	3/4 (0.70)	3/4 (0.70)	3/4 (0.70)	3/4 (0.70)	yd (m)
View C	5/8 (0.60)	5/8 (0.60)	5/8 (0.60)	5/8 (0.60)	5/8 (0.60)	yd (m)

**Notions:** Thread. Views A & B: Six 5/8" (15 mm) buttons. View C: Five 5/8" (15 mm) buttons.