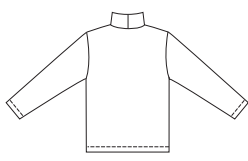
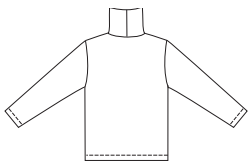


Boys' and Girls' pullover shirts. View A has turtleneck and long sleeves. View B has mock turtleneck and long sleeves. View C has crew neckline and long sleeves. View D has crew neckline and short sleeves. All neckbands can be made from self fabric or ribbing.

VIEW A Back

VIEW B Back



VIEW C Back

VIEW D Back



**KWIK•SEW®**  
**3043** price



**BOYS' AND GIRLS' SHIRTS**  
 Sizes: XS (4-5), S (6), M (7-8),  
 L (10), XL (12-14)

DESIGNED FOR STRETCH KNITS ONLY WITH 25% STRETCH  
 Suggested Fabrics: Interlock, textured knits, thermal knits, stretch velour

DUAL INSTRUCTION INCLUDED: SERGER (OVERLOCK) AND STANDARD SEWING MACHINES

Size	XS (4-5)	S (6)	M (7-8)	L (10)	XL (12-14)	
Height	42 (107)	46 (117)	50 (127)	55 (140)	60 (152)	" (cm)
Chest	23 1/2 (60)	25 (64)	26 1/2 (67)	28 1/2 (72)	31 (79)	" (cm)
Hip	24 (61)	25 1/2 (65)	27 1/2 (70)	30 (76)	32 (81)	" (cm)
<b>Finished Length at Center Back from Natural Neckline</b>						
View A, B, C & D	15 3/4 (40)	17 (43)	18 1/2 (47)	20 1/4 (51)	22 (56)	" (cm)
<b>Material Required:</b> Fabric requirement allows for nap, one-way design or shading. Extra fabric may be needed to match design or for shrinkage.						
<b>Fabric 60" (152 cm) Wide</b>						
View A	7/8 (0.80)	7/8 (0.80)	1 (0.95)	1 (0.95)	1 1/8 (1.05)	yd (m)
View B	3/4 (0.70)	3/4 (0.70)	7/8 (0.80)	7/8 (0.80)	1 1/8 (1.05)	yd (m)
View C	3/4 (0.70)	3/4 (0.70)	3/4 (0.70)	7/8 (0.80)	1 1/8 (1.05)	yd (m)
View D	5/8 (0.60)	5/8 (0.60)	3/4 (0.70)	3/4 (0.70)	3/4 (0.70)	yd (m)
<b>Optional Ribbing 28" (70 cm) Wide for Neckband</b>						
View A	10 (25)	10 (25)	10 (25)	10 (25)	10 (25)	" (cm)
View B	5 (13)	5 (13)	6 (15)	6 (15)	6 (15)	" (cm)
View C & D	3 (8)	3 (8)	3 (8)	3 (8)	3 (8)	" (cm)

**Notions:** Thread, scrap piece of fusible interfacing.