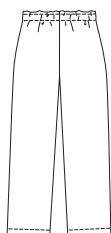


PANTS VIEW A & B



Men's pajamas. Pants, without side seams, have stitched elastic waist. View A shirt has full length sleeves and ribbing neckband. View B shirt has V-neckline with self fabric neckband and full length sleeves. View C shirt has V-neckline with self fabric neckband, contrast front and back, and short sleeves.



MEN'S

# KWIK & EASY

**KWIK•SEW®**  
price **3044**

**DESIGNED FOR STRETCH KNITS ONLY WITH 20% STRETCH**  
Suggested Fabrics: Single knit, interlock, thermal knit, textured knits

**MEN'S PAJAMAS**  
Sizes: S-M-L-XL-XXL

Size	S	M	L	XL	XXL	
<b>Finished Length of Shirt at Center Back</b>						
Views A, B & C	28 (71)	29 (73)	30 (76)	31 (78)	32 (81)	" (cm)
<b>Finished Inside Leg Seam</b>						
Views A & B	29 1/2" (75 cm) All Sizes					
View C	10" (25 cm) All Sizes					
<b>Material Required:</b> Fabric requirement allows for nap, one-way design or shading. Extra fabric may be needed to match design or for shrinkage.						
<b>Fabric 60" (152 cm) Wide</b>						
View A	3 (2.75)	3 (2.75)	3 1/4 (3.00)	3 3/8 (3.10)	3 5/8 (3.35)	yd (m)
View B	3 (2.75)	3 1/8 (2.85)	3 1/4 (3.00)	3 1/2 (3.20)	3 3/4 (3.45)	yd (m)
View C	1 1/4 (1.15)	1 1/4 (1.15)	1 1/4 (1.15)	1 5/8 (1.50)	1 7/8 (1.75)	yd (m)
Contrast Fabric	1 (0.95)	1 (0.95)	1 (0.95)	1 (0.95)	1 (0.95)	yd (m)
<b>Ribbing 28" (70 cm) Wide</b>						
View A	3" (8 cm) All Sizes					

**Notions:** Thread, Scrap piece of fusible interfacing, 1 1/2" (4 cm) wide elastic - 1 yd (0.95 m) for sizes S - M - L - XL, 1 1/8 yd (1.05 m) for size XXL.