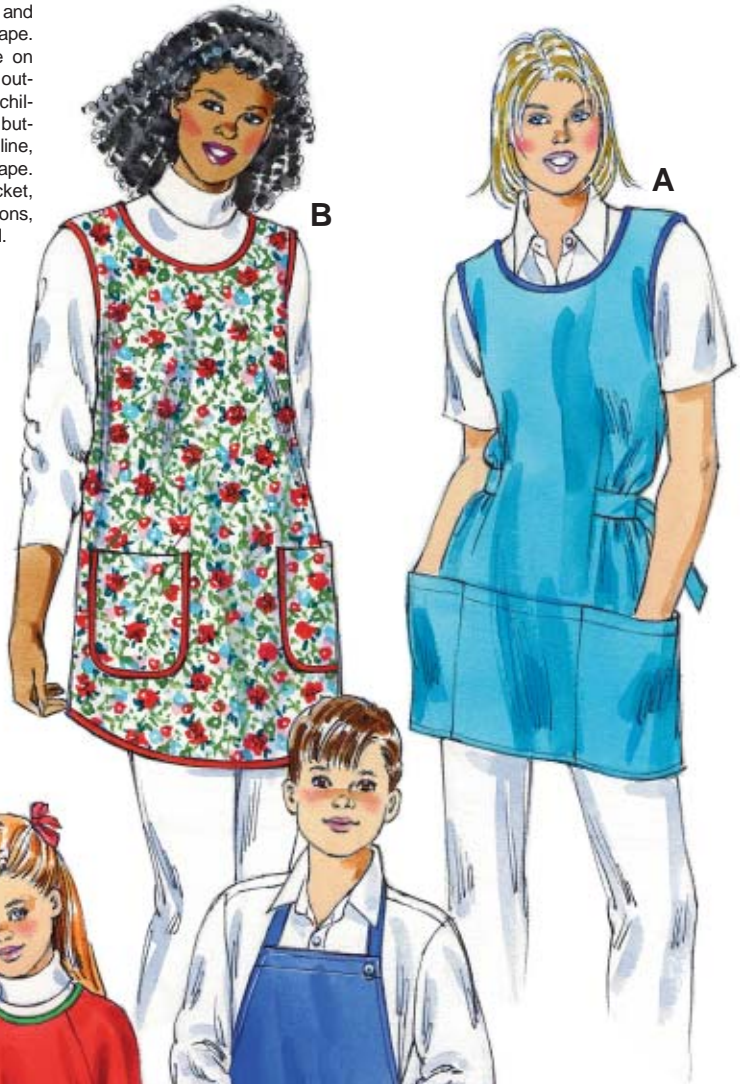
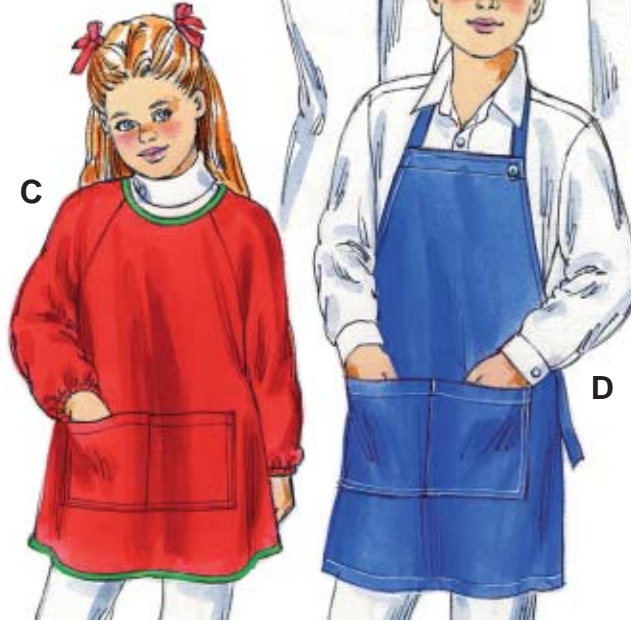
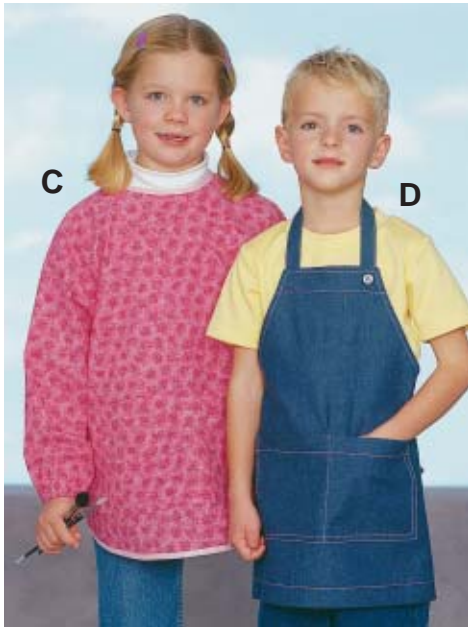
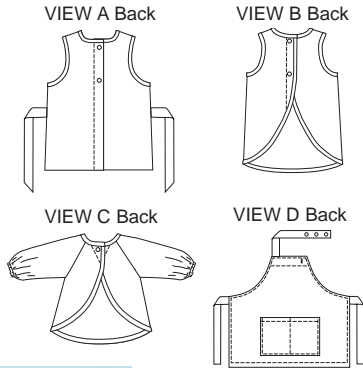




Misses' and children's aprons. View A misses' apron has two button closure on back, pocket at bottom edge, ties are stitched to front and tie on back, and neckline and armholes are finished with bias tape. View B misses' apron has two button closure on back, patch pockets, shaped hemline and all outside edges are finished with bias tape. View C children's apron has full length raglan sleeves, one button closure on back, patch pocket, shaped hemline, and all outside edges are finished with bias tape. View D children's apron has patch pocket, adjustable neck strap with buttonhole and buttons, ties on back, and all outside edges are hemmed.



GIFTS & THINGS

KWIK•SEW® 3046 price

MISSES' & CHILDREN'S APRONS

Misses' Sizes: S-M-L

Children's Sizes: S-M-L

DESIGNED FOR WOVEN FABRICS

Suggested Fabrics: Cotton, cotton types, calico, denim, twill

Body Measurements:

MISSES SIZES	S	M	L	
Bust	34 - 36 (87-92)	38 - 40 (97-102)	42 - 44 (107-112)	" (cm)
CHILDREN'S SIZES S	M	L		
Size	4-6	7-8	10-12	
Height	42 (107)	48 (122)	54 (137)	" (cm)
Chest	23 (58)	25 1/2 (65)	28 (71)	" (cm)

Material Required: Fabric requirement allows for nap, one-way design or shading. Extra fabric may be needed to match design or for shrinkage.

Fabric 60" (152 cm) Wide

View A (Misses')	1 5/8 (1.50)	2 (1.85)	yd (m)
View B (Misses')	1 (0.95)	1 1/8 (1.05)	yd (m)
View C (Children's)	1 1/8 (1.05)	1 1/2 (1.40)	yd (m)
View D (Children's)	5/8 (0.60)	3/4 (0.70)	yd (m)

Fabric 45" (115 cm) Wide

View A (Misses')	2 1/8 (1.95)	2 1/4 (2.10)	yd (m)
View B (Misses')	1 1/4 (1.15)	1 3/8 (1.30)	yd (m)
View C (Children's)	1 3/8 (1.30)	1 5/8 (1.50)	yd (m)
View D (Children's)	3/4 (0.70)	7/8 (0.80)	yd (m)

Fusible Interfacing 24" (60 cm) Wide

View A	7/8 (0.80)	1 (0.95)	yd (m)
View B	5/8 (0.60)	5/8 (0.60)	yd (m)

Notions: Thread. View A: Two 3/4" (20 mm) buttons, 2 1/2 yd (2.30 m) of double fold bias tape. View B: Two 3/4" (20 mm) buttons, double fold bias tape - 6 yd (5.50 m) for size S; 6 1/2 yd (6 m) for sizes M & L. View C: One 5/8" (15 mm) button, 1/2 yd (0.50 m) of 1/4" (6 mm) wide elastic, 3 yd (2.75 m) of double fold bias tape, scrap piece of fusible interfacing. View D: One 5/8" (15 mm) button, scrap piece of fusible interfacing.