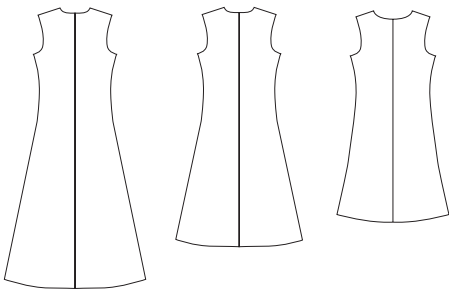




Misses' bias cut close fitting dresses are lined and have center front and center back seams. View A and B have V-neckline. View C has scoop neckline.

VIEW A Back    VIEW B Back    VIEW C Back



**KWIK-SEW®**  
**3049** price

**MISSES' DRESSES** DESIGNED FOR SOFT LIGHTWEIGHT WOVEN FABRICS  
 Sizes: XS-S-M-L-XL    Suggested Fabrics: Silk, silk like fabrics, crepe, charmeuse, georgette, challis

Size	XS	S	M	L	XL	
<b>Finished Length at Center Back from Natural Neckline</b>						
View A	49 (125)	50 (127)	50 1/2 (129)	51 (130)	52 (132)	" (cm)
View B	41 (105)	42 (107)	42 1/2 (109)	43 (110)	44 (112)	" (cm)
View C	35 (89)	36 (91)	36 1/2 (93)	37 (95)	38 (97)	" (cm)
<b>NOTE:</b> Finished Length may vary due to bias cut.						
<b>Material Required:</b> Fabric requirement allows for nap, one-way design or shading. Extra fabric may be needed to match design or for shrinkage.						
<b>Fabric &amp; Lining 60" (152 cm) Wide</b>						
View A	2 3/4 (2.55)	3 (2.75)	3 1/8 (2.85)	3 1/4 (3.00)	3 3/8 (3.10)	yd (m)
View B	2 1/8 (1.95)	2 1/8 (1.95)	2 1/4 (2.10)	2 1/2 (2.30)	2 5/8 (2.40)	yd (m)
View C	1 7/8 (1.75)	2 (1.85)	2 (1.85)	2 1/8 (1.95)	2 1/8 (1.95)	yd (m)
<b>Fabric &amp; Lining 45" (115 cm) Wide</b>						
View A	NOT SUITABLE					
View B	2 5/8 (2.40)	2 7/8 (2.65)	3 1/8 (2.85)	3 1/8 (2.85)	3 3/8 (3.10)	yd (m)
View C	2 3/8 (2.20)	2 3/8 (2.20)	2 1/2 (2.30)	2 5/8 (2.40)	2 3/4 (2.55)	yd (m)

**Notions:** Thread.