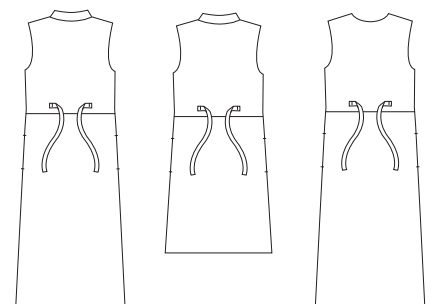




DRESSES

Misses' semi-fitted sleeveless dresses have front button closure, bust darts, waist seam, self fabric ties on back waist, tucks on front skirt at waist, and pockets in side seams. View A and B have collar. View C has V-neckline finished with facings.

VIEW A Back    VIEW B Back    VIEW C Back



**KWIK•SEW**  
price **3050**

**DESIGNED FOR LIGHT TO MEDIUM WEIGHT WOVEN FABRICS**  
Suggested Fabrics: Cotton, cotton types, challis, crepe, linen, rayon and blends

**MISSES' DRESSES**  
Sizes: XS-S-M-L-XL

Size	XS	S	M	L	XL	
<b>Finished Length at Center Back from Waist</b>						
Views A & C	34" (86 cm) All Sizes					
View B	24" (61 cm) All Sizes					
<b>Material Required:</b> Fabric requirement allows for nap, one-way design or shading. Extra fabric may be needed to match design or for shrinkage.						
<b>Fabric 60" (152 cm) Wide</b>						
Views A & C	2 3/4 (2.55)	2 7/8 (2.65)	2 7/8 (2.65)	2 7/8 (2.65)	2 7/8 (2.65)	yd (m)
View B	2 1/4 (2.10)	2 3/8 (2.20)	2 3/8 (2.20)	2 3/8 (2.20)	2 3/8 (2.20)	yd (m)
<b>Fabric 45" (115 cm) Wide</b>						
View A	3 1/2 (3.20)	3 1/2 (3.20)	3 1/2 (3.20)	4 1/8 (3.80)	4 1/8 (3.80)	yd (m)
View B	2 7/8 (2.65)	3 (2.75)	3 (2.75)	3 1/8 (2.85)	3 1/8 (2.85)	yd (m)
View C	3 1/4 (3.00)	3 1/4 (3.00)	3 1/4 (3.00)	3 7/8 (3.55)	3 7/8 (3.55)	yd (m)
<b>Fusible Interfacing 24" (60 cm) Wide</b>						
Views A & C	1 1/4 (1.15)	1 1/4 (1.15)	1 1/4 (1.15)	1 1/4 (1.15)	1 1/4 (1.15)	yd (m)
View B	1 1/8 (1.05)	1 1/8 (1.05)	1 1/8 (1.05)	1 1/8 (1.05)	1 1/8 (1.05)	yd (m)
<b>Notions:</b> Thread. View A & C: eight 5/8" (15 mm) buttons. View B: seven 5/8" (15 mm) buttons.						