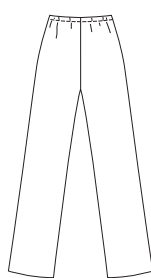
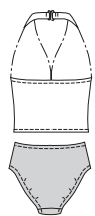


Misses' two piece swimsuit has halter top with hook closure on back neckline and lined upper front with gathers under bust. View B top is cropped. Panties have lined front and waist and leg openings are finished with elastic, View B has low cut waist. Pants, without side seams, have stitched elastic waist.

VIEW A Back

VIEW B Back

PANTS



ACTIVE & SWIMWEAR

**KWIK•SEW®**  
**3063** price

**MISSES' SWIMSUITS & PANTS**  
 Sizes: XS-S-M-L-XL

DESIGNED FOR TWO-WAY STRETCH FABRIC WITH 75% STRETCH  
 Suggested Fabrics: Swimwear fabric with spandex Lycra®

Size	XS	S	M	L	XL	
<b>Finished Inside Leg Seam of Pants</b>	30 1/2 (77)	30 1/2 (77)	30 1/2 (77)	30 1/2 (77)	30 1/2 (77)	" (cm)
<b>Material Required:</b> Fabric requirement allows for nap, one-way design or shading. Extra fabric may be needed to match design or for shrinkage.						
<b>Fabric 45" (115 cm) or 60" (152 cm) Wide</b>						
View A Fabric	1/2 (0.50)	1/2 (0.50)	1/2 (0.50)	5/8 (0.60)	5/8 (0.60)	yd (m)
Contrast Fabric	1/2 (0.50)	1/2 (0.50)	1/2 (0.50)	5/8 (0.60)	5/8 (0.60)	yd (m)
View B	3/4 (0.70)	3/4 (0.70)	7/8 (0.80)	1 (0.95)	1 1/8 (1.05)	yd (m)
Pants	1 3/8 (1.30)	1 3/8 (1.30)	1 1/2 (1.40)	1 5/8 (1.50)	1 3/4 (1.60)	yd (m)
<b>Swimwear Lining 29" (74 cm) Wide (minimum width)</b>						
View A & B	1/2 (0.50)	1/2 (0.50)	1/2 (0.50)	5/8 (0.60)	5/8 (0.60)	yd (m)
<b>Notions:</b> Thread. VIEWS A & B: 3/8" (1 cm) wide swimwear elastic - 3 yd (2.75 m) for sizes XS - S - M; 3 1/2 yd (3.20 m) for sizes L - XL; one 3/4" (2 cm) swimwear hook. PANTS: 1 yd (0.95 m) of 3/8" (1 cm) wide elastic.						