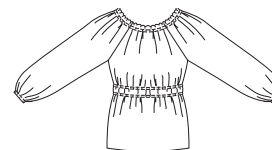


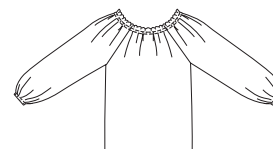


Misses' pull-over tops have raglan sleeves, neckline gathered with elastic in casing, forming ruffle. View A and B have three-quarter length sleeves gathered with elastics in casings at bottom edges. View A has gathering under bust with elastic in casings. View C has short sleeves gathered with elastic in casings, forming ruffles, and gathering under bust with elastic in casings. View D has short sleeves gathered with elastic in casings forming ruffles, and elastic in casing at bottom edge, forming a wider ruffle.

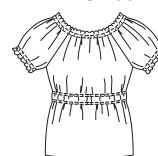
VIEW A Back



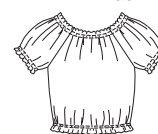
VIEW B Back



VIEW C Back



VIEW D Back



**KWIK•SEW®**

price **3065**

**DESIGNED FOR LIGHTWEIGHT WOVEN FABRICS**

Suggested Fabrics: Cotton types, georgette, challis, gauze, batiste, rayon blends

**MISSSES' TOPS**

Sizes: XS-S-M-L-XL

Sizes	XS	S	M	L	XL	
<b>Finished Length at Center Back from Natural Neckline</b>						
Views A, B & C	23 (58)	23 1/2 (60)	24 (61)	24 1/2 (62)	25 (63)	" (cm)
View D	20 1/2 (52)	21 (53)	21 1/2 (54)	22 (56)	22 1/2 (57)	" (cm)
<b>NOTE:</b> Finished length may vary due to the elastic at neckline and under bust.						
<b>Material Required:</b> Fabric requirement allows for nap, one-way design or shading. Extra fabric may be needed to match design or for shrinkage.						
<b>Fabric 60" (152 cm) Wide</b>						
Views A & B	1 1/2 (1.40)	1 1/2 (1.40)	1 1/2 (1.40)	1 5/8 (1.50)	1 5/8 (1.50)	yd (m)
Views C & D	1 1/8 (1.05)	1 1/8 (1.05)	1 1/8 (1.05)	1 1/4 (1.15)	1 1/4 (1.15)	yd (m)
<b>Fabric 45" (115 cm) Wide</b>						
Views A & B	1 1/2 (1.40)	1 5/8 (1.50)	2 1/4 (2.10)	2 1/4 (2.10)	2 7/8 (2.65)	yd (m)
Views C & D	1 3/8 (1.30)	1 3/8 (1.30)	1 3/4 (1.60)	1 3/4 (1.60)	2 1/8 (1.95)	yd (m)
<b>Notions:</b> Thread. View A: 1/4" (6 mm) wide elastic- 3 5/8 yd (3.35 m) for sizes XS-S-M; 4 yd (3.70 m) for sizes L-XL.						
View B: 1/4" (6 mm) wide elastic- 1 5/8 yd (1.50 m) for sizes XS-S-M; 1 7/8 yd (1.75 m) for sizes L-XL.						
View C: 1/4" (6 mm) wide elastic- 3 3/4 yd (3.45 m) for sizes XS-S-M; 4 3/8 yd (4.00 m) for sizes L-XL.						
View D: 1/4" (6 mm) wide elastic- 2 7/8 yd (2.65 m) for sizes XS-S-M; 3 1/4 yd (3.00 m) for sizes L-XL.						