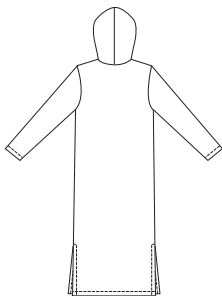




Misses' pull-over gowns. View A has V-neckline with self fabric neckband and shaped hemline. View B has hood, pocket and side hemline slits.

View A Back

View B Back



KWIK•SEW®
3081 price



KWIK & EASY

MISSES' GOWNS
 Sizes: XS-S-M-L-XL

DESIGNED FOR STRETCH KNITS ONLY

Suggested Fabrics: Light to medium weight Polarfleece®, sweatshirt fleece, French terry

Size	XS	S	M	L	XL	
Finished Length at Center Back from Natural Neckline						" (cm)
View A & B	45 (114)	45 1/2 (115)	46 (117)	46 1/2 (118)	47 (120)	
Material Required: Fabric requirement allows for nap, one-way design or shading. Extra fabric may be needed to match design or for shrinkage.						
Fabric 60" (152 cm) Wide						
VIEW A	2 1/8 (1.95)	2 1/4 (2.10)	2 1/4 (2.10)	2 7/8 (2.65)	2 7/8 (2.65)	yd (m)
VIEW B	2 3/8 (2.20)	2 1/2 (2.30)	2 1/2 (2.30)	2 7/8 (2.65)	2 7/8 (2.65)	yd (m)
Notions: Thread. Scrap piece of fusible interfacing.						

SLEEPWEAR & LINGERIE