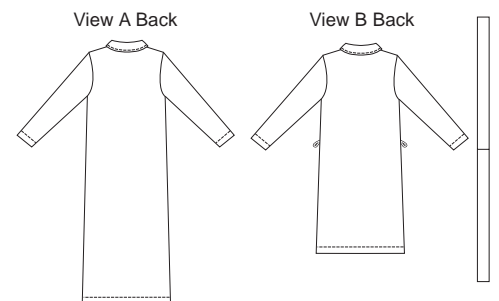


Misses' robes have front button closure, collar, extended shoulders and full length sleeves. View A has patch pockets. View B has pockets in side seams, belt loops and self fabric tie belt.



KWIK & EASY

KWIK•SEW®
price **3082**

DESIGNED FOR MEDIUM TO HEAVYWEIGHT STRETCH KNITS ONLY
Suggested Fabrics: Polarfleece®, sweatshirt fleece

MISSES' ROBES
Sizes: XS-S-M-L-XL

Size	XS	S	M	L	XL	
Finished Length at Center Back						
View A	52 1/2 (133)	53 (134)	53 1/2 (136)	54 1/2 (138)	55 (140)	" (cm)
View B	40 1/2 (103)	41 (104)	41 1/2 (106)	42 1/2 (108)	43 (110)	" (cm)
Material Required: Fabric requirement allows for nap, one-way design or shading. Extra fabric may be needed to match design or for shrinkage.						
Fabric 60" (152 cm) Wide						
View A	2 1/4 (2.10)	2 3/8 (2.20)	3 1/4 (3.00)	3 3/8 (3.10)	3 3/8 (3.10)	yd (m)
View B	2 1/4 (2.10)	2 1/4 (2.10)	2 7/8 (2.65)	3 (2.75)	3 (2.75)	yd (m)
Fusible Interfacing 24" (60 cm) Wide						
View A	1 1/2 (1.40)	1 1/2 (1.40)	1 1/2 (1.40)	1 1/2 (1.40)	1 1/2 (1.40)	yd (m)
View B	1 1/8 (1.05)	1 1/8 (1.05)	1 1/4 (1.15)	1 1/4 (1.15)	1 1/4 (1.15)	yd (m)
View A and B: Piece of woven fabric for neckline binding 18" x 18" (45 cm x 45 cm) - All Sizes						
Notions: Thread. View A: Seven 7/8" (22 mm) buttons. View B: Five 7/8" (22 mm) buttons.						

SLEEPWEAR & LINGERIE