



A

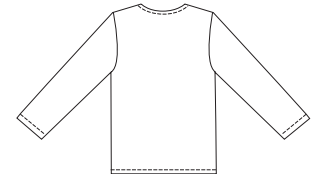


B

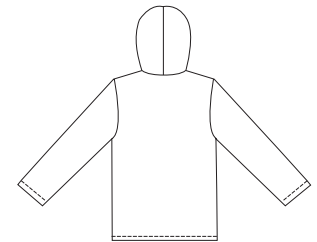


Misses' unlined jackets have front zippers, and facings from contrast fabric. View A has round neckline and patch pockets. View B has pockets in side seams and hood with inside hood from contrast fabric.

VIEW A Back



VIEW B Back



KWIK & EASY

KWIK•SEW®
price **3085**

DESIGNED FOR HEAVYWEIGHT STRETCH KNITS ONLY

Suggested Fabrics: Polarfleece®, sweatshirt fleece, berber fleece

Contrast Fabric: Lightweight knit or woven fabrics such as single knit, interlock, cotton flannel, cotton types

MISSSES' JACKETS

Sizes: XS-S-M-L-XL

Size	XS	S	M	L	XL	
Finished Length at Center Back						
View A & B	24 1/2 (63)	25 1/2 (65)	26 (67)	27 (69)	27 1/2 (71)	" (cm)
Material Required: Fabric requirement allows for nap, one-way design or shading. Extra fabric may be needed to match design or for shrinkage.						
Fabric 60" (152 cm) Wide						
View A	1 1/2 (1.40)	1 1/2 (1.40)	1 5/8 (1.50)	1 5/8 (1.50)	1 5/8 (1.50)	yd (m)
View B	1 1/2 (1.40)	1 5/8 (1.50)	1 5/8 (1.50)	1 5/8 (1.50)	1 7/8 (1.75)	yd (m)
Contrast Fabric 45" (115 cm) or 60" (152 cm) Wide						
View A & B	7/8 (0.80)	7/8 (0.80)	7/8 (0.80)	7/8 (0.80)	1 (0.95)	yd (m)
Fusible Interfacing 24" (60 cm) Wide						
View A & B	7/8 (0.80)	7/8 (0.80)	7/8 (0.80)	7/8 (0.80)	1 (0.95)	yd (m)
Notions: Thread, one separating zipper - 22" (55 cm) for size XS; 24" (60 cm) for sizes S - M - L - XL (purchase suggested length of zipper or longer - zipper will be trimmed).						

JACKETS