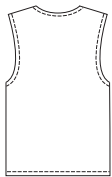




Misses' unlined vests have front zipper and hemmed armholes. View A has round neckline, zipper pockets, and facings from contrast fabric. View B has hood and patch pockets.

VIEW A Back



VIEW B Back



**KWIK•SEW®**  
**3086** price

**KWIK & EASY**

**MISSES' VESTS**  
 Sizes: XS-S-M-L-XL

DESIGNED FOR HEAVYWEIGHT STRETCH KNITS ONLY

Suggested Fabrics: Polarfleece®, sweatshirt fleece, berber fleece

Contrast Fabrics: Lightweight knit or woven fabrics such as single knit, interlock, cotton flannel, cotton types

Size	XS	S	M	L	XL	
<b>Finished Length at Center Back</b>						
View A & B	22 1/2 (58)	23 1/2 (60)	24 (62)	25 (64)	25 1/2 (66)	" (cm)
<b>Material Required:</b> Fabric requirement allows for nap, one-way design or shading. Extra fabric may be needed to match design or for shrinkage.						
<b>Fabric 60" (152 cm) Wide</b>						
View A	3/4 (0.70)	7/8 (0.80)	7/8 (0.80)	7/8 (0.80)	7/8 (0.80)	yd (m)
View B	1 1/8 (1.05)	1 1/8 (1.05)	1 1/4 (1.15)	1 1/4 (1.15)	1 3/8 (1.30)	yd (m)
<b>Contrast Fabric 45" (115 cm) or 60" (152 cm) Wide</b>						
View A	3/4 (0.70)	7/8 (0.80)	7/8 (0.80)	7/8 (0.80)	7/8 (0.80)	yd (m)
<b>Fusible Interfacing 24" (60 cm) Wide</b>						
View A	3/4 (0.70)	3/4 (0.70)	7/8 (0.80)	7/8 (0.80)	7/8 (0.80)	yd (m)
<b>Notions:</b> Thread, one separating zipper - 22" (55 cm) for size XS; 24" (60 cm) for sizes S - M - L - XL (purchase suggested length of zipper or longer - zipper will be trimmed). View A: two 6" (15 cm) zippers. View B: 3" x 12" (8 cm x 30 cm) piece of fusible interfacing.						