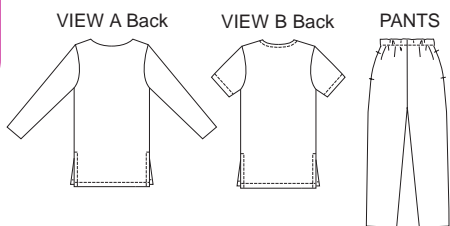




Misses' tunics and pants. Pull-over tunics have side hemline slits and necklines are finished with facings. View A has boat neckline and full length sleeves. View B has V-neckline and short sleeves. Pull-on pants have elastic in casing at waist and pockets in outside leg seams.

PANTS



KWIK•SEW®
3087 price

KWIK & EASY

MISSES' TUNICS & PANTS

DESIGNED FOR LIGHT TO MEDIUM WEIGHT WOVEN FABRICS

Sizes: XS-S-M-L-XL

Suggested Fabrics: Cotton, cotton types, linen, challis, rayon and blends, silk, crepe

Size	XS	S	M	L	XL	
Finished Length of Tunic at Center Back from Natural Neckline						
Views A & B	27 1/2 (70)	28 1/2 (72)	29 1/2 (75)	30 1/2 (78)	31 1/2 (80)	" (cm)
Finished Inside Leg Seam 30" (76 cm) All Sizes						
Material Required: Fabric requirement allows for nap, one-way design or shading. Extra fabric may be needed to match design or for shrinkage.						
Fabric 60" (152 cm) Wide						
Tunic View A	1 5/8 (1.50)	1 5/8 (1.50)	1 3/4 (1.60)	1 3/4 (1.60)	1 3/4 (1.60)	yd (m)
View B	1 3/8 (1.30)	1 3/8 (1.30)	1 1/2 (1.40)	1 1/2 (1.40)	1 1/2 (1.40)	yd (m)
Pants	1 5/8 (1.50)	1 5/8 (1.50)	1 3/4 (1.60)	2 1/4 (2.10)	2 3/8 (2.20)	yd (m)
Fabric 45" (115 cm) Wide						
Tunic View A	1 3/4 (1.60)	1 7/8 (1.75)	1 7/8 (1.75)	2 (1.85)	2 3/4 (2.55)	yd (m)
View B	1 3/4 (1.60)	1 7/8 (1.75)	1 7/8 (1.75)	2 (1.85)	2 1/4 (2.10)	yd (m)
Pants	2 3/8 (2.20)	2 1/2 (2.30)	2 5/8 (2.40)	2 5/8 (2.40)	2 3/4 (2.55)	yd (m)
Fusible Interfacing 24" (60 cm) Wide						
Tunic View A & B	3/8 (0.35)	3/8 (0.35)	3/8 (0.35)	3/8 (0.35)	3/8 (0.35)	yd (m)
Notions: Thread. PANTS: 1 yd (0.95 m) of 1" (2.5 cm) wide elastic, scrap piece of fusible interfacing.						