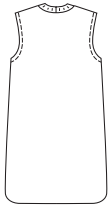


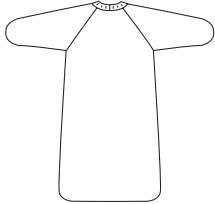


Baby sleep sacks have zipper front, ribbing neckband, tab with snap to cover zipper pull. View A sleeveless sack has armholes finished with narrow hems. View B has raglan sleeves with mitts.

View A Back



View B Back



KWIK•SEW®
3089 price

KWIK & EASY

BABY SLEEP SACKS

Sizes: XS-S-M-L-XL

DESIGNED FOR HEAVYWEIGHT STRETCH KNITS ONLY

Suggested Fabrics: Polarfleece®, blanket fleece, berber fleece, sweatshirt fleece

Size	XS	S	M	L	XL	
Material Required: Fabric requirement allows for nap, one-way design or shading. Extra fabric may be needed to match design or for shrinkage.						
Fabric 60" (152 cm) Wide						
View A	3/4 (0.70)	3/4 (0.70)	7/8 (0.80)	7/8 (0.80)	1 (0.95)	yd (m)
View B	3/4 (0.70)	3/4 (0.70)	7/8 (0.80)	1 1/8 (1.05)	1 1/4 (1.15)	yd (m)
Ribbing 12" (30 cm) Wide (minimum width)						
View A & B	3 (8)	3 (8)	3 (8)	3 (8)	3 (8)	" (cm)

Notions: Thread, scrap piece of fusible interfacing, one snap, one zipper - 20" (50 cm) for size XS; 22" (55 cm) for size S; 24" (60 cm) for size M; 26" (65 cm) for size L; 28" (70 cm) for size XL.

Purchase suggested length of zipper or longer - zipper will be trimmed, OR for sizes M, L, XL use a 22" (55 cm) zipper.