

# KWIK Start™ LEARN-TO-SEW

ESPECIALLY DESIGNED FOR FIRST SEWING PROJECT!

KWIK Start™ LEARN-TO-SEW



KWIK•SEW®

3091 price

## DOLL CLOTHES

Fits 18" (45 cm) Dolls



### STRAIGHT SKIRT

Pull-on straight skirt has elastic in casing at waist and is designed for woven and knit fabrics.

**Material Required:** 1/4 yd (0.25 m) of 20" (50 cm) wide fabric (minimum width).

**Notions:** Thread, 9" (25 cm) of 1/4" (6 mm) wide elastic.

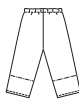


### GATHERED SKIRT

Pull-on skirt in two lengths is gathered with elastic in casing at waist and designed for light to medium weight woven and knit fabrics.

**Material Required:** 30" (76 cm) wide fabric (minimum width) – 3/8 yd (0.35 m) for long skirt, 1/4 yd (0.25 m) for short skirt.

**Notions:** Thread, 9" (25 cm) of 1/4" (6 mm) wide elastic.



### PANTS

Pull-on pants, without side seams, in two lengths have elastic in casing at waist. Designed for woven or knit fabrics.

**Material Required:** 3/8 yd (0.35 m) of 22" (56 cm) wide fabric (minimum width)

**Notions:** Thread, 9" (25 cm) of 1/4" (6 mm) wide elastic.

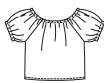


### WRAP TOP

Dolman sleeve wrap top has outside edges finished with narrow hems and ribbon ties. Designed for woven or knit fabrics.

**Material Required:** 1/4 yd (0.25 m) of 45" (115 cm) wide fabric (minimum width)

**Notions:** Thread, 24" (60 cm) of narrow ribbon.



### PEASANT TOP

Top has raglan sleeves and is gathered at neckline and bottom edges of sleeves with elastic in casings. Designed for lightweight woven or knit fabrics.

**Material Required:** 1/4 yd (0.25 m) of 36" (92 cm) wide fabric (minimum width)

**Notions:** Thread, 5/8 yd (0.60 m) of 1/8" (3 mm) wide elastic.

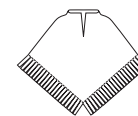


### NIGHTGOWN

Nightgown has raglan sleeves and is gathered at neckline and bottom edges of sleeves with elastic in casings. Bottom edge can be hemmed or finished with narrow lace. Designed for lightweight woven or knit fabrics.

**Material Required:** 1/2 yd (0.50 m) of 45" (115 cm) wide fabric (minimum width)

**Notions:** 5/8 yd (0.60 m) of 1/8" (3mm) wide elastic. Optional: 26" (65 cm) of narrow lace for bottom edge.



### PONCHO

Pullover poncho with front slit, has shaped bottom edge which is cut to make fringe. Designed for heavy stretch knit fabrics such as Polarfleece®.

**Material Required:** 3/8 yd (0.35 m) of 34" (87 cm) wide fabric (minimum width)

**Notions:** Thread.



### JACKET

Dolman sleeve jacket has collar in one with front and tie belt. Designed for heavy stretch knit fabrics such as Polarfleece®.

**Material Required:** 3/8 yd (0.35 m) of 38" (97 cm) wide fabric (minimum width)

**Notions:** Thread.



### HAT

Hat has tassel and is designed for heavy stretch knit fabrics such as Polarfleece®.

**Material Required:** 1/2 yd (0.50 m) of 20" (50 cm) wide fabric (minimum width)

**Notions:** Thread.

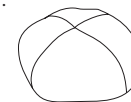


### SCARF

Scarf has ends cut to make fringe and is designed for heavy stretch knit fabrics such as Polarfleece®.

**Material Required:** 1/4 yd (0.25 m) of 26" (65 cm) wide fabric (minimum width)

**Notions:** Thread.

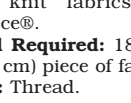


### BEANBAG CHAIR

Beanbag chair has four panels and is filled with Styrofoam beanbag filler. Designed for woven or knit fabrics

**Material Required:** 5/8 yd (0.60 m) of 45" (115 cm) wide fabric (minimum width)

**Notions:** Thread, Styrofoam beanbag filler.



### BLANKET

Blanket has ends cut to make fringe and is designed for heavy stretch knit fabrics such as Polarfleece®.

**Material Required:** 18" x 24" (46 cm x 61 cm) piece of fabric.

**Notions:** Thread.



GIFTS & THINGS