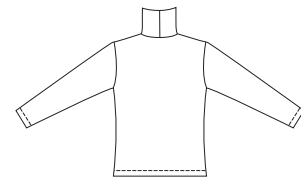
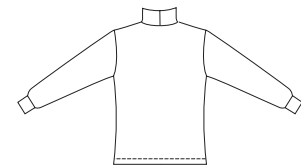


Misses' pull-over tops. View A has turtleneck and full length sleeves. View B has mock turtleneck and full length sleeves with cuffs. Neckbands and cuffs can be from self fabric or ribbing.

VIEW A Back



VIEW B Back



KWIK•SEW®
3093 price

MISSSES' TOPS
 Sizes: XS-S-M-L-XL

DESIGNED FOR STRETCH KNITS ONLY WITH 25% STRETCH

Suggested Fabrics: Interlock, textured knits, thermal knits, pointelle jersey, matte jersey, stretch velour

DUAL INSTRUCTION INCLUDED: SERGER (OVERLOCK) AND STANDARD SEWING MACHINES

Size	XS	S	M	L	XL	
Finished Length at Center Back						
Views A & B	22 1/4 (57)	23 (59)	24 (61)	24 3/4 (63)	25 1/2 (65)	" (cm)
Material Required: Fabric requirement allows for nap, one-way design or shading. Extra fabric may be needed to match design or for shrinkage.						
Fabric 60" (152 cm) Wide						
View A	1 1/2 (1.40)	1 1/2 (1.40)	1 5/8 (1.50)	1 5/8 (1.50)	1 5/8 (1.50)	yd (m)
View B	1 3/8 (1.30)	1 1/2 (1.40)	1 1/2 (1.40)	1 1/2 (1.40)	1 5/8 (1.50)	yd (m)
Ribbing 28" (70 cm) Wide (optional)						
View A	12 (30)	12 (30)	12 (30)	12 (30)	12 (30)	" (cm)
View B	6 (15)	6 (15)	12 (30)	12 (30)	12 (30)	" (cm)
Notions: Thread, scrap piece of fusible interfacing.						