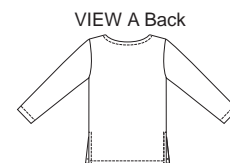
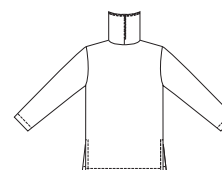


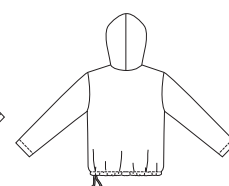
Misses' pullover tops have full length sleeves. View A and B are tunic length. View A has neckline facing from contrast fabric and side hemline slits. View B has single layer fold-over collar and side hemline slits. View C has hood and drawstring in casing at bottom edge.



VIEW B Back



VIEW C Back



KWIK & EASY

KWIK•SEW®
price **3094**

DESIGNED FOR HEAVYWEIGHT STRETCH KNITS

Suggested Fabrics: Polarfleece®, heavy fleece, berber fleece, sweatshirt fleece

Contrast Fabric View A in lightweight woven fabrics

MISSES' TOPS
Sizes: XS-S-M-L-XL

Size	XS	S	M	L	XL	
Finished Length at Center Back from Natural Neckline						
View A & B	28 (71)	29 (74)	30 (76)	31 (79)	32 (81)	" (cm)
View C	25 (63)	26 (66)	27 (68)	28 (71)	29 (73)	" (cm)
Material Required: Fabric requirement allows for nap, one-way design or shading. Extra fabric may be needed to match design or for shrinkage.						
Fabric 60" (152 cm) Wide						
View A	1 5/8 (1.50)	1 5/8 (1.50)	1 5/8 (1.50)	1 3/4 (1.60)	1 3/4 (1.60)	yd (m)
View B	1 7/8 (1.75)	1 7/8 (1.75)	2 (1.85)	2 (1.85)	2 (1.85)	yd (m)
View C	1 7/8 (1.75)	1 7/8 (1.75)	2 (1.85)	2 (1.85)	2 (1.85)	yd (m)
Contrast Fabric 30" (75 cm) Wide (minimum width)						
View A	1/4 (0.25)	1/4 (0.25)	1/4 (0.25)	1/4 (0.25)	1/4 (0.25)	yd (m)
Fusible Interfacing 24" (60 cm) Wide						
View A	1/4 (0.25)	1/4 (0.25)	1/4 (0.25)	1/4 (0.25)	1/4 (0.25)	yd (m)

Notions: Thread. View B & C: Scrap piece of fusible interfacing. View C: One drawstring.