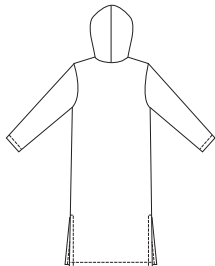




Girls' pullover gowns. View A has V-neckline with self fabric neckband and shaped hemline. View B has hood, pocket and side hemline slits.

VIEW A Back

VIEW B Back



**KWIK•SEW®**  
**3102** price

**KWIK & EASY**

**GIRLS' GOWNS**

**DESIGNED FOR STRETCH KNITS ONLY**

Sizes: XS (4-5), S (6),  
M (7-8), L (10), XL (12-14)

Suggested Fabrics: light to medium weight Polarfleece®, sweatshirt fleece,  
French terry

| Size   | XS (4-5)     | S (6)        | M (7-8)      | L (10)       | XL (12-14)   |        |
|--|--------------|--------------|--------------|--------------|--------------|--------|
| Height   | 42 (107)     | 46 (117)     | 50 (127)     | 55 (140)     | 60 (152)     | " (cm) |
| Chest  | 23 1/2 (60)  | 25 (64)      | 26 1/2 (67)  | 28 1/2 (72)  | 31 (79)      | " (cm) |
| Hip  | 24 (61)      | 25 1/2 (65)  | 27 1/2 (70)  | 30 (76)      | 32 (81)      | " (cm) |
| <b>Finished Length at Center Back from Natural Neckline</b>  |              |              |              |              |              |        |
| View A & B   | 29 (73)      | 31 3/4 (80)  | 34 3/4 (88)  | 38 (96)      | 41 3/4 (106) | " (cm) |
| <b>Material Required:</b> Fabric requirement allows for nap, one-way design or shading. Extra fabric may be needed to match design or for shrinkage. |              |              |              |              |              |        |
| <b>Fabric 60" (152 cm) Wide</b>  |              |              |              |              |              |        |
| View A   | 1 (0.95)     | 1 1/8 (1.05) | 1 5/8 (1.50) | 1 3/4 (1.60) | 1 7/8 (1.75) | yd (m) |
| View B   | 1 1/4 (1.15) | 1 1/4 (1.15) | 1 3/4 (1.60) | 1 7/8 (1.75) | 2 (1.85)     | yd (m) |
| <b>Notions:</b> Thread, scrap piece of fusible interfacing.  |              |              |              |              |              |        |