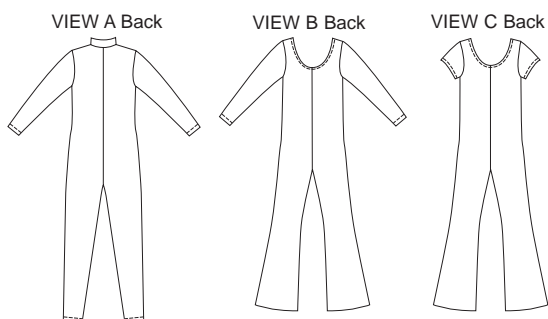




Girls' unitards, without side seams. View A has stand-up collar, front zipper extending into collar, and full length sleeves. View B and C have scoop neckline finished with elastic and flared legs. View B has full length sleeves, View C has short sleeves.



KWIK•SEW®

3103

3104 ^{price}

KWIK & EASY

GIRLS' UNITARDS

3103 Sizes: 4-5-6-7

3104 Sizes: 8-10-12-14

DESIGNED FOR TWO-WAY STRETCH FABRICS WITH 75% STRETCH

Suggested Fabrics: Nylon Lycra®, cotton Lycra®, swimwear fabrics

Size	4	5	6	7	8	10	12	14	
Back Waist Length	10 (25.5)	10 1/2 (27)	11 (28)	11 1/2 (29)	12 (30.5)	12 1/2 (32)	13 1/2 (34.5)	14 1/2 (36)	" (cm)
Inside Leg to Floor	15 3/4 (40)	17 3/8 (44)	19 (48)	20 1/2 (52)	22 (56)	24 (61)	26 (66)	28 (71)	" (cm)

Material Required: Fabric requirement allows for nap, one-way design or shading. Extra fabric may be needed to match design or for shrinkage.

Fabric 60" (152 cm) Wide with Greatest Degree of Stretch on Crosswise Grain

View A	1 (0.95)	1 1/8 (1.05)	1 1/8 (1.05)	1 1/4 (1.15)	1 1/4 (1.15)	1 3/8 (1.30)	1 1/2 (1.40)	1 1/2 (1.40)	yd (m)
View B & C	1 1/8 (1.05)	1 1/8 (1.05)	1 1/4 (1.15)	1 1/4 (1.15)	1 3/8 (1.30)	1 1/2 (1.40)	1 1/2 (1.40)	1 5/8 (1.50)	yd (m)

Fabric 60" (152 cm) Wide with Greatest Degree of Stretch on Lengthwise Grain

View A	1 (0.95)	1 (0.95)	1 1/8 (1.05)	1 1/8 (1.05)	1 1/4 (1.15)	1 3/8 (1.30)	1 1/2 (1.40)	1 5/8 (1.50)	yd (m)
View B	1 (0.95)	1 (0.95)	1 1/8 (1.05)	1 3/8 (1.30)	1 1/4 (1.15)	1 3/8 (1.30)	1 1/2 (1.40)	1 5/8 (1.50)	yd (m)
View C	1 (0.95)	1 (0.95)	1 1/8 (1.05)	1 1/8 (1.05)	1 1/8 (1.05)	1 1/8 (1.05)	1 1/4 (1.15)	1 5/8 (1.50)	yd (m)

Fabric 45" (115 cm) Wide with Greatest Degree of Stretch on Crosswise Grain

View A	1 (0.95)	1 1/8 (1.05)	1 1/8 (1.05)	1 1/4 (1.15)	1 7/8 (1.75)	1 7/8 (1.75)	2 1/8 (1.95)	2 1/4 (2.10)	yd (m)
View B	1 1/8 (1.05)	1 1/8 (1.05)	1 1/4 (1.15)	1 1/4 (1.15)	1 7/8 (1.75)	2 (1.85)	2 1/8 (1.95)	2 1/4 (2.10)	yd (m)
View C	1 1/8 (1.05)	1 1/8 (1.05)	1 1/4 (1.15)	1 1/4 (1.15)	1 3/8 (1.30)	1 1/2 (1.40)	1 1/2 (1.40)	1 5/8 (1.50)	yd (m)

Notions: Thread. View A: One zipper - 14" (35 cm) for sizes 4-5; 16" (40 cm) for sizes 6-7; 18" (45 cm) for sizes 8-10; 20" (50 cm) for sizes 12-14. View B & C: 1 yd (0.95 m) of 3/8" (1 cm) wide elastic.