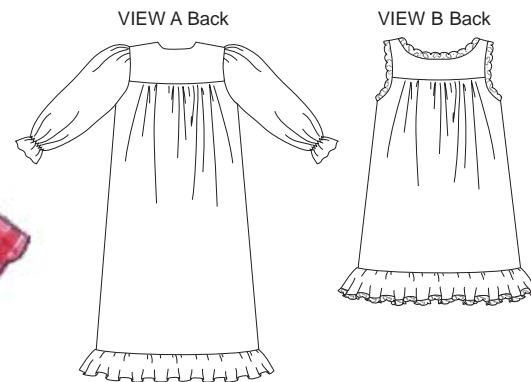




Girls' nightgowns have front and back gathered to yokes and ruffle at bottom edge. View A has double yoke with button closure, and gathered sleeves have gathering at wrist with elastic. View B has single layer yoke, and neckline, armholes and bottom edge are finished with lace.



KWIK•SEW®
price **3105**

DESIGNED FOR LIGHT TO MEDIUM WEIGHT WOVEN AND FIRM KNIT FABRICS
Suggested Fabrics: Cotton, flannelette, broadcloth, batiste, satin, silk like fabrics

GIRLS' NIGHTGOWNS
Sizes: XS (4-5), S (6), M (7-8), L (10), XL (12-14)

Size	XS (4-5)	S (6)	M (7-8)	L (10)	XL (12-14)	
Height	42 (107)	46 (117)	50 (127)	55 (140)	60 (152)	" (cm)
Chest	23 1/2 (60)	25 (64)	26 1/2 (67)	28 1/2 (72)	31 (79)	" (cm)
Hip	24 (61)	25 1/2 (65)	27 1/2 (70)	30 (76)	32 (81)	" (cm)
Finished Length at Center Back from Natural Neckline						
View A	32 1/2 (82)	36 (92)	39 3/4 (101)	43 3/4 (111)	48 1/2 (123)	" (cm)
View B	29 3/4 (76)	32 3/4 (83)	35 3/4 (90)	38 (97)	41 3/4 (106)	" (cm)
Material Required: Fabric requirement allows for nap, one-way design or shading. Extra fabric may be needed to match design or for shrinkage.						
Fabric 60" (152 cm) Wide						
View A	1 5/8 (1.50)	1 3/4 (1.60)	1 7/8 (1.75)	2 1/2 (2.30)	2 3/4 (2.55)	yd (m)
View B	1 1/8 (1.05)	1 1/4 (1.15)	1 1/4 (1.15)	1 3/8 (1.30)	2 3/8 (2.20)	yd (m)
Fabric 45" (115 cm) Wide						
View A	2 (1.85)	2 1/8 (1.95)	2 1/4 (2.10)	3 1/8 (2.85)	3 3/8 (3.10)	yd (m)
View B	1 3/4 (1.60)	1 7/8 (1.75)	2 (1.85)	2 1/8 (1.95)	2 3/8 (2.20)	yd (m)

Notions: Thread. View A: 1/2 yd (0.50 m) of 1/8" (3 mm) wide elastic; two 1/2" (13 mm) buttons; scrap piece of fusible interfacing. View B: 3/8" - 5/8" (1 cm - 1.5 cm) wide lace - 3 1/4 yd (3.00 m) for sizes XS-S, 3 3/4 yd (3.45 m) for sizes M-L-XL.