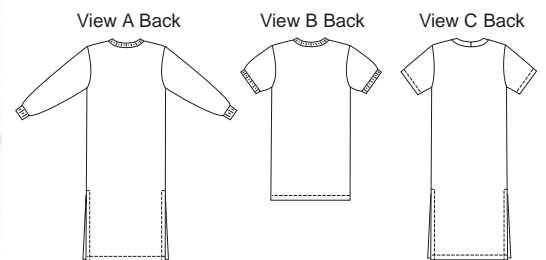


Misses' pullover nightgowns. View A has front placket with button closure, ribbing neckband, full length sleeves with ribbing cuffs, and side hemline slits. View B has front placket with button closure, ribbing neckband, and short sleeves with ribbing bands. View C has round neckline with self fabric neckband and side hemline slits.



# KWIK & EASY

**KWIK•SEW**  
price **3107**

DESIGNED FOR STRETCH KNITS ONLY WITH 25% STRETCH  
Suggested Fabrics: Interlock, pointelle knit, textured knits, thermal knits, single knits

**MISSSES' NIGHTGOWNS**  
Sizes: XS-S-M-L-XL

Size	XS	S	M	L	XL	
<b>Finished Length from Natural Neckline</b>						
View A or C	49 1/4 (125)	49 1/2 (126)	50 (127)	50 1/2 (128)	50 3/4 (129)	" (cm)
View B	37 (94)	37 1/2 (95)	38 (96)	38 1/4 (97)	38 1/2 (98)	" (cm)
<b>Material Required:</b> Fabric requirement allows for nap, one-way design or shading. Extra fabric may be needed to match design or for shrinkage.						
<b>Fabric 60" (152 cm) Wide</b>						
View A	2 1/8 (1.95)	2 1/4 (2.10)	2 1/4 (2.10)	3 (2.75)	3 1/8 (2.85)	yd (m)
View B	1 5/8 (1.50)	1 5/8 (1.50)	1 5/8 (1.50)	1 5/8 (1.50)	1 7/8 (1.75)	yd (m)
View C	1 7/8 (1.75)	1 7/8 (1.75)	1 7/8 (1.75)	3 (2.75)	3 1/8 (2.85)	yd (m)
<b>Ribbing 28" (70 cm) Wide</b>						
View A	8 (21)	8 (21)	8 (21)	8 (21)	8 (21)	" (cm)
View B	6 (15)	6 (15)	6 (15)	6 (15)	6 (15)	" (cm)
<b>Fusible Interfacing 22" (56 cm) Wide</b>						
View A or B	1/2 (0.50)	1/2 (0.50)	1/2 (0.50)	1/2 (0.50)	1/2 (0.50)	yd (m)

**Notions:** Thread. View A & B: Four 1/2" (12 mm) buttons.