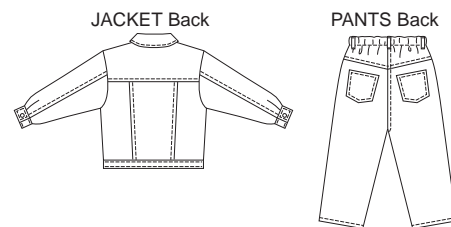




Toddlers' jacket and pants. Jacket has extended shoulders, front and back yokes, three-panel front and back, buttoned pocket flaps at front yoke seam, pockets in front panel seams, two-piece sleeves with cuffs, waistband and topstitching detail. Pants have fly zipper, front waistband and elastic in back, belt loops, back yoke, back patch pockets, front pockets, coin pocket and topstitching detail.



KWIK•SEW®
price **3113**

DESIGNED FOR MEDIUM WEIGHT WOVEN FABRICS
Suggested Fabrics: Denim, corduroy, twill, linen

TODDLERS' JACKET & PANTS
Sizes: T1-T2-T3-T4

Size	T1	T2	T3	T4	
Finished Length of Jacket at Center Back	12 (30)	12 1/2 (32)	13 (33)	13 1/2 (34)	" (cm)
Finished Inside Leg Seam	10 1/2 (27)	12 (30)	13 1/2 (34)	15 (38)	" (cm)
Material Required: Fabric requirement allows for nap, one-way design or shading. Extra fabric may be needed to match design or for shrinkage.					
Fabric 60" (152 cm) Wide					
Jacket	7/8 (0.80)	1 (0.95)	1 (0.95)	1 (0.95)	yd (m)
Pants	5/8 (0.60)	5/8 (0.60)	3/4 (0.70)	3/4 (0.70)	yd (m)
Fabric 45" (115 cm) Wide					
Jacket	1 1/4 (1.15)	1 1/4 (1.15)	1 3/8 (1.30)	1 3/8 (1.30)	yd (m)
Pants	7/8 (0.80)	7/8 (0.80)	1 (0.95)	1 (0.95)	yd (m)
Pocket Lining 24" (60 cm) Wide (minimum width)					
Pants	1/4 (0.25)	1/4 (0.25)	1/4 (0.25)	1/4 (0.25)	yd (m)

Notions: Thread. JACKET: 5/8" (15 mm) buttons – eight for sizes T1-T2, nine for sizes T3-T4.

PANTS: One 5/8" (15 mm) button, one 7" (18 cm) zipper.

NOTE: Purchase suggested length of zipper or longer, zipper will be trimmed.